

QUICK REFERENCE GUIDE

PAGE 1



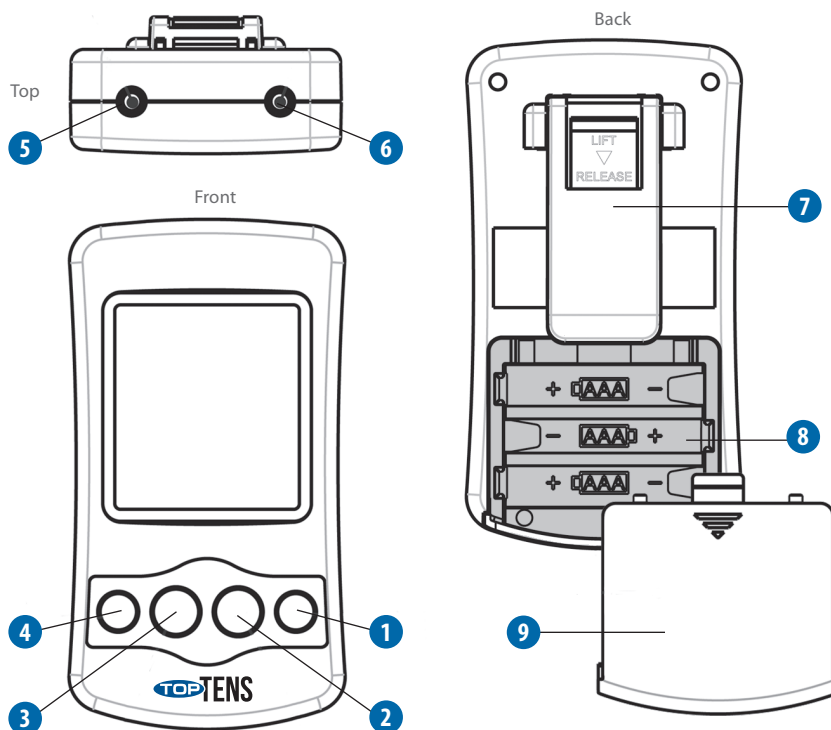
The purpose of this guide is to assist you in correctly operating your TopTENS™ unit. Do not use this device for undiagnosed pain symptoms until consulting a physician. This guide is not intended to replace or substitute the TopTENS™ Instruction Manual. **PLEASE READ THE INSTRUCTION MANUAL COMPLETELY BEFORE USING THIS DEVICE.** Read, understand and practice the contraindications, warnings, cautions and operating instructions found on pages 1-9 of your instruction manual. Always follow the operating instructions prescribed by your healthcare provider.

TOP TENS™ UNIT

- 1 On / + button: Power on adjust / increase setting key
- 2 Off / - button: Power off adjust / decrease setting key
- 3 Therapy mode selection button/ Time selection button
- 4 Mode: Mode selection button
- 5 Channel 1 output socket
- 6 Channel 2 output socket
- 7 Belt clip
- 8 Battery compartment
- 9 Battery cover

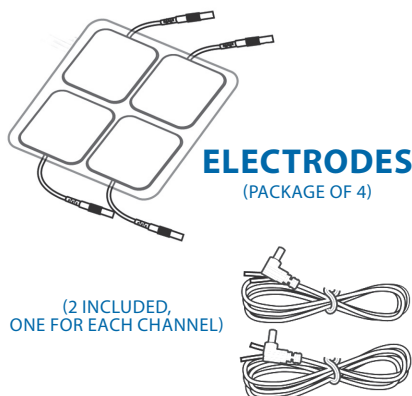
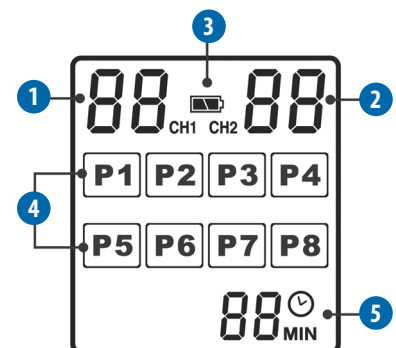
TOP TENS DT6030 replacement parts:

WW6000 – white lead wires
E1P2020BC2 – electrodes



LCD DISPLAY

- 1 Channel 1 intensity level
- 2 Channel 2 intensity level
- 3 Low battery indicator
- 4 Program number
- 5 Timer



QUICK REFERENCE GUIDE

PAGE 2

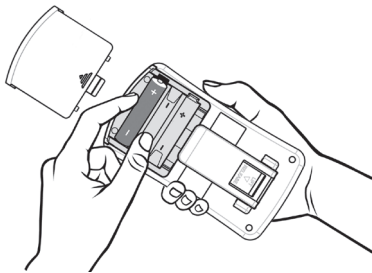


IMPORTANT!

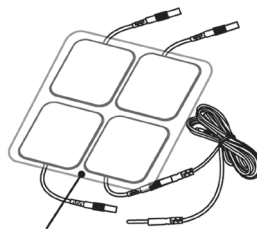
Steps 1–4 should be performed with the device turned OFF. Once the unit has been turned ON, do not remove electrodes without first turning OFF the device.

1 INSERT BATTERY

Press arrow and slide battery compartment cover open. Insert the 3 AAA batteries, matching the + and – ends to those in unit.



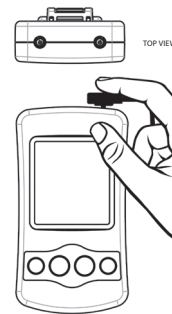
2 CONNECT ELECTRODES TO LEAD WIRES



Firmly insert the end of the lead wire pin into the electrode connectors.

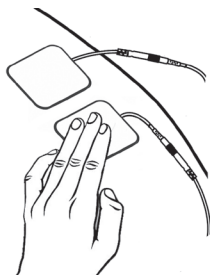
Make sure the connection is complete and no bare metal of the pins is exposed.

3 CONNECT LEAD WIRES TO TOP OF DEVICE



This unit operates with one or two sets of electrodes. When using one set, plug lead wire into Channel 1 on top of the unit. Use Channel 2 to operate a second set of electrodes.

4 PLACE ELECTRODES ON SKIN



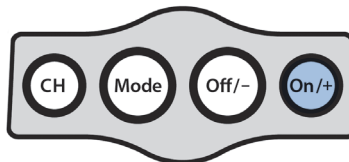
Remove electrodes from protective backing. Keep backing to properly store electrodes after use.

Before applying electrodes, make sure the skin at the application site is clean and dry.

See **Electrode Placement Guide** for more information.

5

Check that electrodes are securely placed on the skin before activating device. Press the **On / +** button located on the far right of the control panel to turn the device ON.



Do not remove or adjust electrodes until turning the device off by pressing the **Off / -** button for 3 seconds.

6 SELECT PROGRAM

Pressing the **Mode** button will activate the default therapy mode setting, and will flash on the display. Press the **On / +** to increase the therapy mode or **Off / -** to decrease.



Changing the program setting during a therapy session will not affect the selected treatment time.

7 SELECT DESIRED TREATMENT TIME



Press the **Mode** button to select one of 12 preset treatment times ranging from 5–60 minutes or continuous. Press the **On / +** to increase the treatment time or **Off / -** to decrease.

Changing the treatment time setting during a therapy session will not affect the selected program.

8 SELECT THERAPY INTENSITY LEVEL

Press the **CH** button to select the appropriate channel and intensity level for each. The CH1 / CH2 will flash on display. Press the **On / +** to increase the intensity level or **Off / -** to decrease to a comfortable level.



As a safety precaution, changing the therapy mode setting during a therapy session cause the intensity level to reset to 0.

SPECIAL FEATURES

The TopTENS[™] unit will turn off automatically when therapy time has elapsed. In continuous mode (C), the device must be turned off manually by pressing the **Off / -** button.

If you alter the program mode during your therapy, the treatment time will not restart unless you reset the therapy time.

As a safety feature, the intensity level will change to 0 when the Mode button is pressed during a session.

Low battery indicator  signals when battery is low. Replace battery when stimulation feels weaker.