



MATERIAL SAFETY DATA SHEET

Product name: PCB

Model Number: Applies to item number DT6030

Date prepared: October 30, 2014

1. COMPANY IDENTIFICATION:

Manufacturer: Roscoe Medical Inc.
21973 Commerce Pkwy
Strongsville, OH. 44149

Department: Quality Department

Telephone Number: 800-633-4839

Fax Number: 650-697-3596

2. COMPOSITION / INFORMATION ON INGREDIENTS

Testing method: With reference to IEC 62321:2008 Procedures for the Determination of Levels of Regulated Substances in Electrotechnical Products.

1. Determination of Cadmium by ICP-AES.
2. Determination of Lead by ICP-AES.
3. Determination of Mercury by ICP-AES.
4. Determination of Hexavalent Chromium for non-metallic samples by UV/Vis Spectrometry.
5. Determination of PBB and PBDE by GC/MS.

Please see the below table and use the above number list in the "Method (Refer to)" section.

21973 Commerce Parkway
Strongsville, OH 44149

Toll free: 800-3-ROSCOE (376-7263)
main: 440-572-1962
fax: 440-572-42691

www.roscoemedical.com

MATERIAL SAFETY DATA SHEET

Test Item (s):	Method (Refer to)	Result	MDL	RoHS Limit
		No. 1		
Cadmium (Cd)	1	N/A	2	100
Lead (Pb)	2	N/A	2	1000
Mercury (Hg)	3	N/A	2	1000
Hexavalent Chromium Cr(VI) by alkaline extraction	4	N/A	2	1000
Sum of PBBs	5	N/A	-	1000
Monobromobiphenyl			5	-
Dibromobiphenyl			5	-
Tribromobiphenyl			5	-
Tetrabromobiphenyl			5	-
Pentabromobiphenyl			5	-
Heptabromobiphenyl			5	-
Octabromobiphenyl			5	-
Nonabromobiphenyl			5	-
Decabromobiphenyl			5	-
Sum of PBDEs			-	1000
Monobromodiphenyl ether			5	-
Dibromodiphenyl ether			5	-
Tribromodiphenyl ether			5	-
Tetrabromodiphenyl ether			5	-
Pentabromodiphenyl ether			5	-
Hexabromodiphenyl ether			5	-
Heptabromodiphenyl ether			5	-
Octabromodiphenyl ether			5	-
Nonabromodiphenyl ether			5	-
Decabromodiphenyl ether			5	-

Note:

- Mg/kg = ppm; 0.1 wt% = 1000ppm
- MDL = Method Detection Level

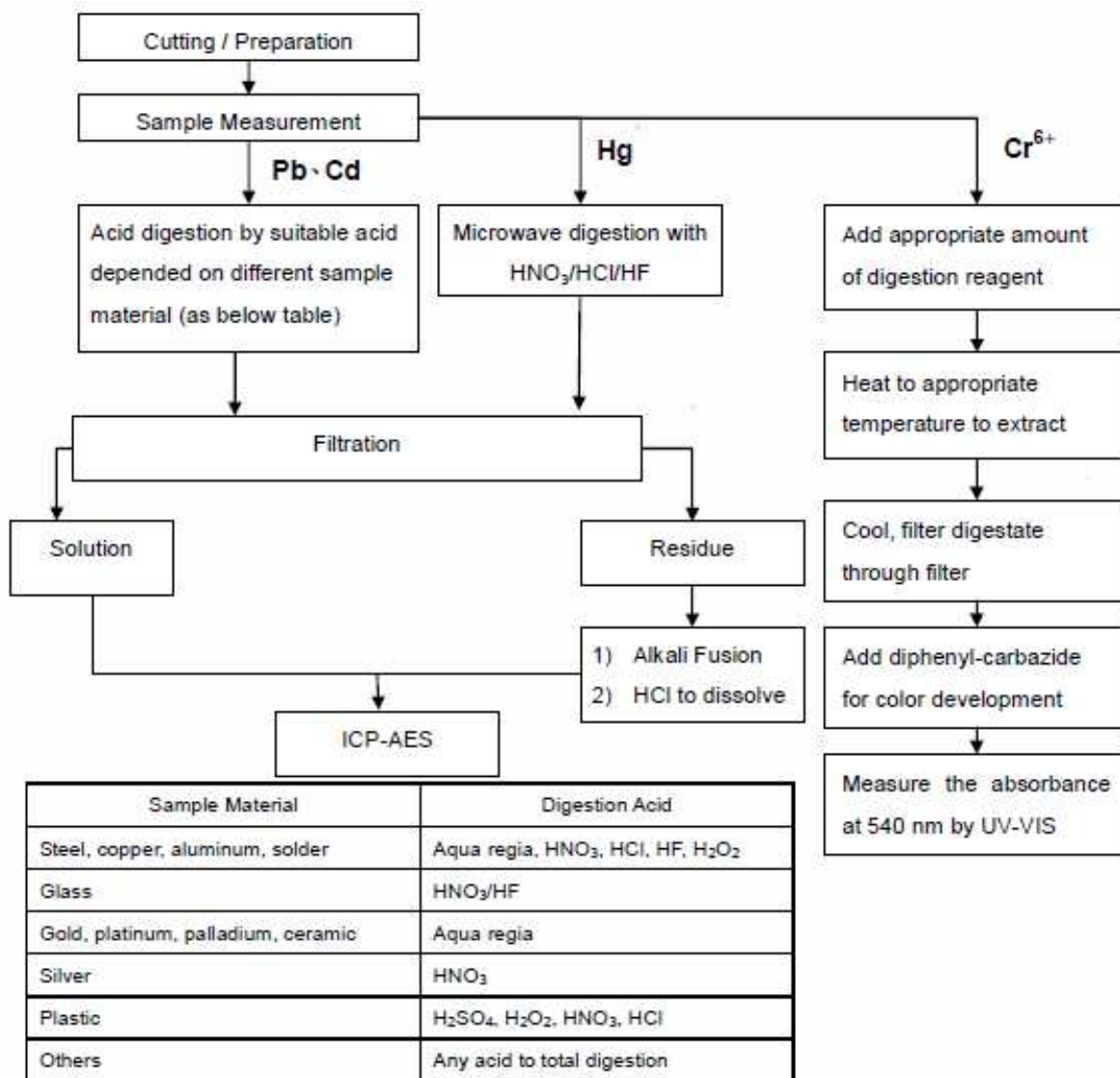
21973 Commerce Parkway
 Strongsville, OH 44149

Toll free: 800-3-ROSCOE (376-7263)
 main: 440-572-1962
 fax: 440-572-42691

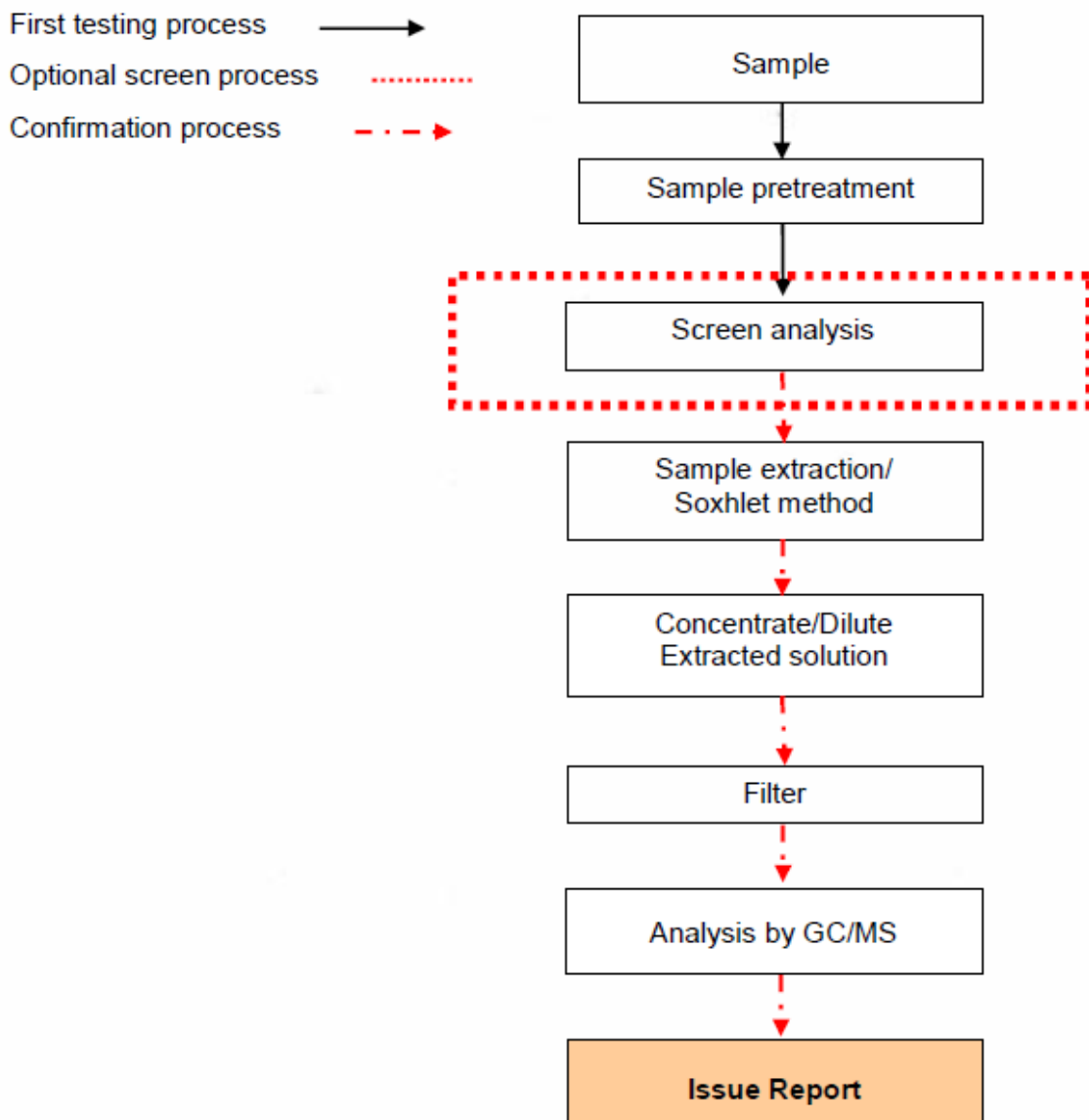
www.roscoemedical.com

MATERIAL SAFETY DATA SHEET

These samples were dissolved totally by pre-conditioning method according to below flow chart (CR⁶⁺ test method excluded).



PBB/PBDE analytical FLOW CHART



MATERIAL SAFETY DATA SHEET



21973 Commerce Parkway
Strongsville, OH 44149

Toll free: 800-3-ROSCOE (376-7263)
main: 440-572-1962
fax: 440-572-42691

www.roscoemedical.com



MATERIAL SAFETY DATA SHEET

3. OTHER INFORMATION

To the best of our knowledge, the information contained herein is accurate. However, Roscoe Medical does not assume any liability whatsoever for the accuracy or completeness of the information contained herein. Final determination of suitability of any material is the sole responsibility of the user.

21973 Commerce Parkway
Strongsville, OH 44149

Toll free: 800-3-ROSCOE (376-7263)
main: 440-572-1962
fax: 440-572-42691

www.roscoemedical.com