

# Mepore® Pro



## SHOWERPROOF, SELF-ADHESIVE ABSORBENT DRESSING

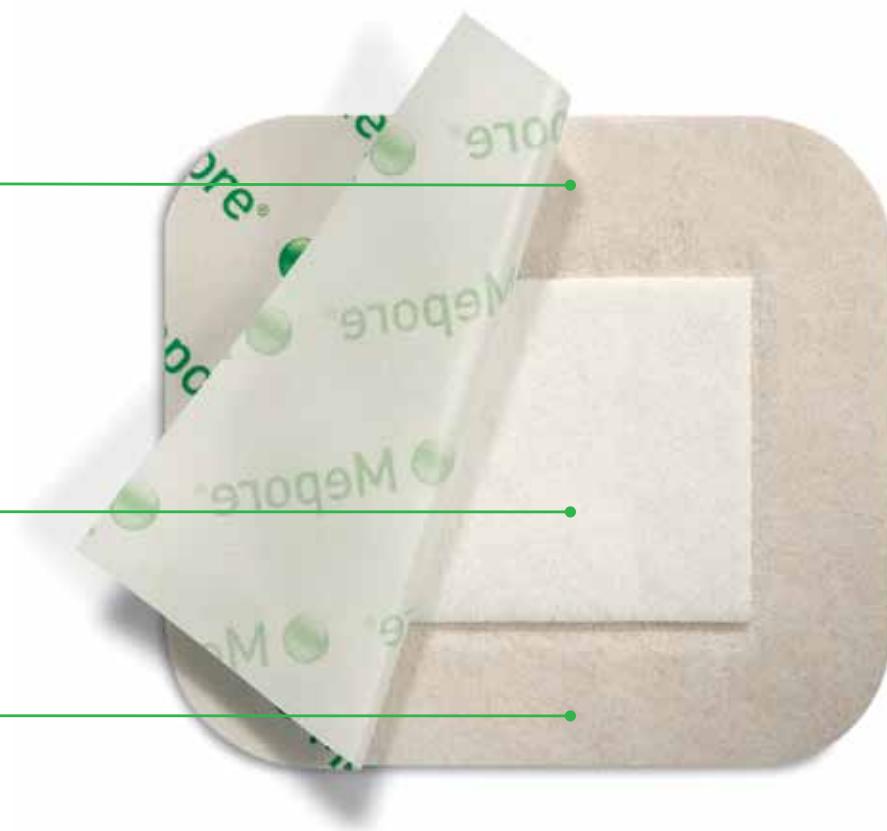
**Mepore® Pro** is a self-adherent, absorbent and breathable dressing with an outer film layer which protects the wound from water and contamination. Its skin-friendly, water-based, solvent-free adhesive provides a gentle and secure fixation.

### Backing film

- Soft, elastic, nonwoven polyester
- Barrier to moisture and bacteria
- Breathable

### Absorbent wound pad

### Skin friendly adhesive



## How to use Mepore® Pro



Open the package and remove the dressing.



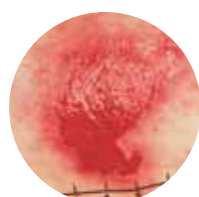
Grip both overlapping release papers, exposing adhesive surface allowing initial fixation of the dressing.



Position the dressing on the skin without stretching and gently remove the rest of the release papers. Firmly smooth adhesive border to obtain proper adhesion. Do not stretch the dressing when applying.

## How Mepore® Pro works

The backing film allows showering and protects the wound from moisture and contamination. It also protects the clinician, clothing and bed linen from blood or exudate strike-through. Due to an absorbent pad and a high vapor permeability of the backing film, **Mepore® Pro** offers good total fluid handling. The polyacrylate adhesive is designed to be gentle to the skin and at the same time provide secure fixation. The easy-to-remove protection paper permits sterile application and simplifies dressing application.



Fragile epithelializing wound



Surgical wound



Skin at risk

## Benefits of Mepore® Pro

- Low adherent wound contact layer minimizes risk of adherence to the wound
- Backing film provides barrier to moisture and bacteria
- Easy-to-remove protection paper allows for convenient and aseptic application
- Breathable film
- Skin friendly adhesive
- Low friction to clothing and bed linens
- Rounded corners for secure fixation (all sizes up to 3.6" x 6")
- Large sizes ideal for post-surgical use

## Areas of use

- Wounds with low to moderate exudate
- Surgical wounds
- Minor burns
- Cuts
- Abrasions

**Wear Time:** PRN

## Mepore® Pro Ordering Information†

Product Code	Size	Pieces/box	Pieces/case	HCPCS
670890	2.5" x 3" (6 x 7 cm)	60	480	A6203
670990	3.6" x 4" (9 x 10 cm)	40	320	A6203
671090	3.6" x 6" (9 x 15 cm)	40	320	A6203
671190	3.6" x 8" (9 x 20 cm)	30	180	A6203
671290	3.6" x 10" (9 x 25 cm)	30	180	A6203
671390	3.6" x 12" (9 x 30 cm)	30	270	A6203

**Note:** Care should be taken to ensure that **Mepore® Pro** is not applied under tension, to prevent shearing forces causing damage to the skin. This is particularly important when the dressing is applied over joints.



5550 Peachtree Parkway, Suite 500, Norcross, GA 30092 | 800.882.4582 | [www.molnlycke.us](http://www.molnlycke.us) | [www.mhcwoundcare.com](http://www.mhcwoundcare.com)

The Mölnlycke Health Care, Mepore, and Safetac, names and respective logos are registered trademarks of Mölnlycke Health Care AB. Distributed by Mölnlycke Health Care US, LLC, Norcross, Georgia 30092. © 2012. Mölnlycke Health Care AB. 1.800.882.4582. US004040804

MHC-2012-354 - 200013 08.12