

Mepore® Film



BREATHABLE, TRANSPARENT SELF-ADHESIVE FILM DRESSING

Mepore® Film is a transparent self-adhesive film dressing ideal as secondary fixation dressing and as primary dressing for a wide range of clean wounds. **Mepore® Film**'s application system is designed for ease-of-use.

Framed delivery system

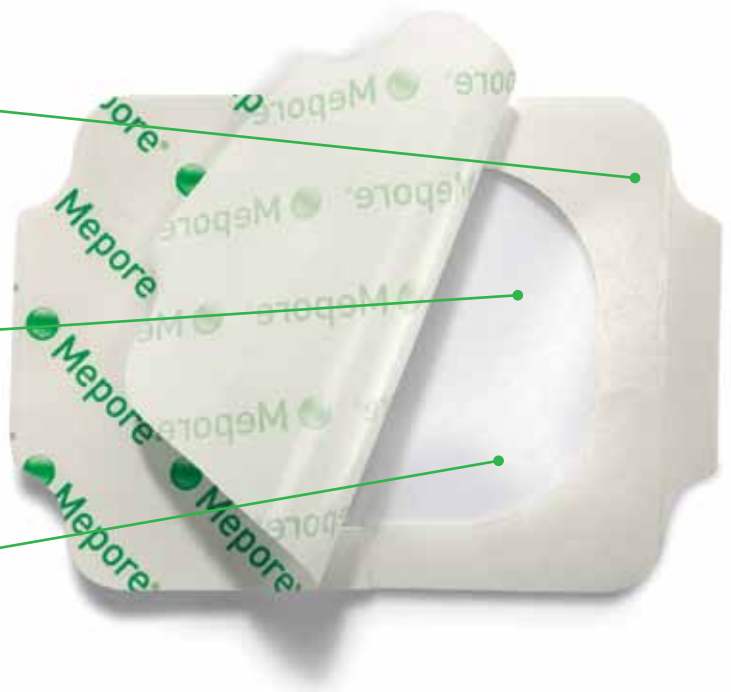
- Easy application

Polyacrylic adhesive

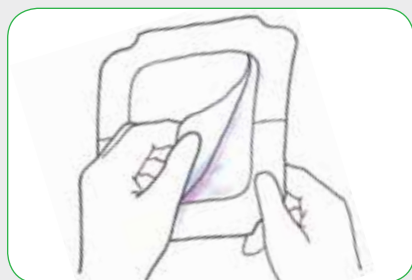
- Skin friendly adhesive
- Secure fixation

Polyurethane film

- Breathable and elastic
- Transparent
- Barrier to moisture and bacteria



How to use Mepore® Film



For sizes 4" x 4.8" and 4" x 10" only:
Remove center cut-out paper and discard.



Remove the protection paper (printed
Mepore® Film) to expose the adhesive.



Position the dressing and firmly smooth
it onto the skin. Remove the paper frame.
Remove the two white paper side tabs.

How Mepore® Film works

Mepore® Film maintains a moist environment in the wound
and due to its high vapor permeability, allows excess
moisture to pass away from the wound and surrounding skin.

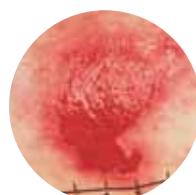
Benefits of Mepore® Film

- High breathability
- Easy application
- Conforms easily to body contours
- Skin friendly adhesive
- Maintains a moist environment
- Protects wound surface
- Barrier against leakage and bacteria
- Protects skin from friction injuries

Areas of use

Mepore® Film is designed for a wide range of clean wounds
in the granulation phase such as:

- Superficial burns
- IV sites
- Abrasions
- Lacerations
- Superficial pressure ulcers
- Donor sites
- Prevention of skin breakdown
- Closed surgical wounds
- As a secondary dressing



*Fragile epithelializing
wound*



Surgical wound



Skin at risk

Mepore® Film Ordering Information†

Product Code	Size	Pieces/ box	Pieces/ case	HCPCS
270600	2.4" x 2.6" (6 x 7 cm)	100	600	A6257
271500	4" x 5" (10 x 12.7 cm)	70	210	A6258
272500	4" x 10" (10 x 25 cm)	20	100	A6258
273000	6" x 8.5" (15 x 21.5 cm)	10	50	A6259

† Packaged sterile in single packs

Note

Mepore® Film should not be used on full-thickness wounds
involving muscle, tendon, bone or on third-degree burns.

Wear time: Up to 7 days



5550 Peachtree Parkway, Suite 500, Norcross, GA 30092 | 800.882.4582 | www.molnlycke.us | www.mhcwoundcare.com

The Mölnlycke Health Care, Mepilex, Mepitel, Mepiform, Mepitac, and Safetac, names and respective logos are registered trademarks of Mölnlycke Health Care AB.
Distributed by Mölnlycke Health Care US, LLC, Norcross, Georgia 30092. © 2012. Mölnlycke Health Care AB. 1.800.882.4582.

MHC-2012-355 - 200010 08.12