



# CARA® Platform

## VISION-LOSS SCREENING

FDA, Health Canada and CE-Approved platform used globally for the screening of Vision Threatening Diseases (VTD).

## CARA

DIAGNOS Healthcare is proud to present the CARA platform, the world's only end-to-end fundus photograph management platform that captures, organizes, enhances, analyzes and displays patient data in a customizable, user-friendly way.

As a low-cost, cloud-based Vision Threatening Diseases Screening Solution, CARA acts as a powerful clinical decision support tool that will automatically identify lesions and even categorize them by disease type: Diabetic Retinopathy, AMD, Glaucoma and others.

## THE CARA PLATFORM IS INTENDED FOR:

- Community events held by **Diabetes Associations**
- Large-scale screenings run by **Governments**
- Screening clinics executed by **General Practitioners**
- Providing a secured and certified PACS engine for **Reading Centers**
- Tracking disease progression for **Ophthalmologists**
- Clinical Trials performed by **University Researchers**



Founded in 1998, DIAGNOS is a publicly-traded corporation (TSX: ADK).

Screening to prevent vision loss

**DIAGNOS**  
Healthcare

# CARA® Platform



“ We are involved in many events in our community aimed at helping our diabetic population live healthier lives... We are extremely satisfied with Diagnos, CARA, and the medical network they make available to our population and definitely plan on using their services in the near future. ”

American Diabetes Association

## DIAGNOS

Healthcare

7005 Taschereau Blvd, Suite 340  
Brossard, QC J4Z 1A7, CANADA

Tel: +1 450 678 8882

Email: [health@diagnos.com](mailto:health@diagnos.com)

[www.diagnos.com](http://www.diagnos.com)

U.S. FDA approved

Health Canada approved

CE Mark for medical devices



## PROGRAM MANAGEMENT

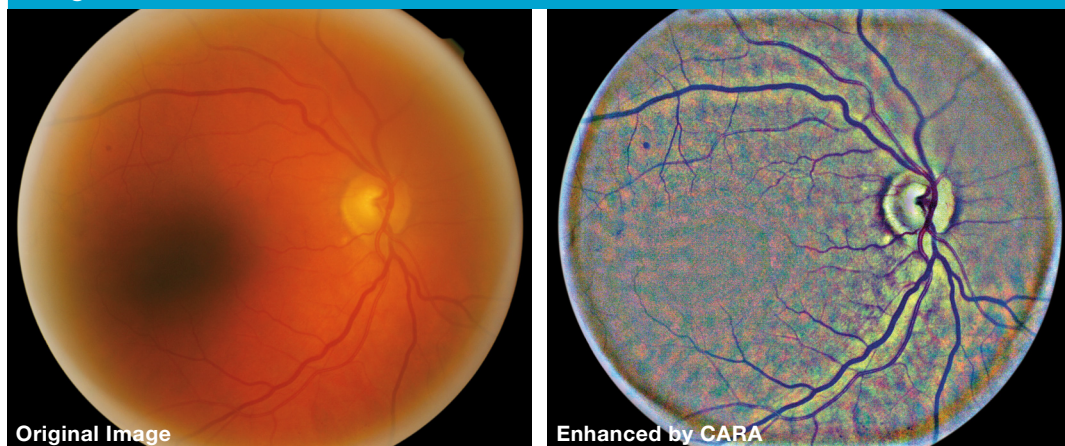
CARA is the most advanced and affordable Vision Threatening Disease screening-management platform available today.

The screenshot displays the CARA platform interface for a patient named Timothy Spiceland (ID: 6198F81F), a 59-year-old male. The interface includes a navigation menu on the left with options like Summary, Retinal images, Health Data, Personal Info, and Visit history. The main content area shows 'Last images' for visits on 2014-01-22, with separate sections for the right eye (OD) and left eye (OS). Each section includes a fundus image, a 'Grade' button, and a summary: 'No Maculopathy + No Photocoagulation + No Retinopathy'. A 'Signature: dg' is also present. On the right, there are 'PDF reports' and 'Last visit' information, including dates and descriptions of visits.

## SCREENING AID

The CARA platform enhances the functionalities presented by fundus cameras with an image-enhancement engine, allowing healthcare professionals to see image details they would not have been able to assess.

### Image-Enhancement Module



## ARTIFICIAL INTELLIGENCE

On top of CARA's complete, vision-threatening disease screening-management functionalities resides a unique, artificial-intelligence engine capable of identifying and categorizing the various lesion types by outlining them with individual color sets.

### Automatic Lesion Detection

