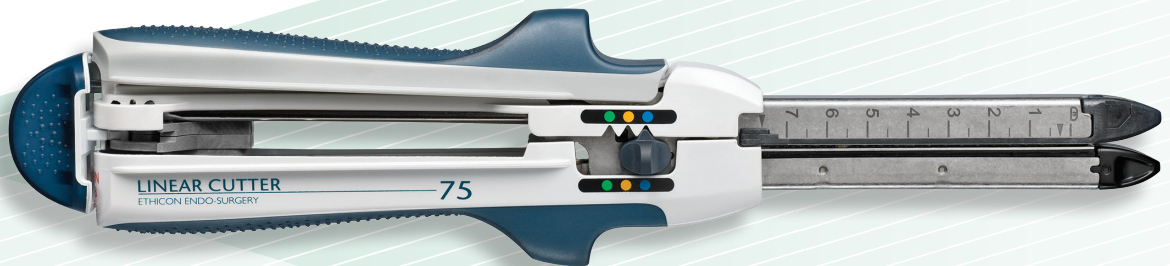


# Consistent compression. Superior seal.

## Ethicon Linear Cutter\*



### Consistent compression

- Innovative 3-D staple technology is designed to produce uniform tissue compression within the staple line

### Reduced risk of leaks

- The Ethicon Linear Cutter helps reduce the risk of staple line leakage compared to the Autosuture DST Series GIA (GIA8038S)<sup>1</sup>

### Superior hemostasis

- The Ethicon Linear Cutter delivers superior hemostasis compared to Autosuture DST Series GIA<sup>2</sup>

### Applicable specialties

- Colorectal
- General
- Gastric
- Thoracic

\* Ethicon Endo-Surgery™ Linear Cutter

<sup>1</sup> Benchtop testing of luminal leak pressure in an excised animal tissue model. Hemostasis assessment based on visual inspection of vessels after transection in an animate porcine model.

<sup>2</sup> Assessment based on visual inspection of vessels after transection in an animate porcine model compared to the Autosuture DST Series GIA (GIA8038S) and Frankenmann Chex Linear Cutter (LC80B).

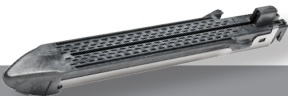
# Product overview

- Innovative 3-D staple design with angled, parallel staple legs to deliver consistent compression
- Proximal preload mechanism and distal tissue stop help ensure consistent staple form
- Versatility of selectable staple height delivers three closed staple heights
- Two lengths available to accommodate a range of procedure applications
- Intermediate locking position allows the surgeon to manipulate tissue without separating the device



Description	Device code	Tissue	Staple rows	Cut line length	Staple line length	Number of staples	Max firings	Qty/box
Ethicon Linear Cutter 55mm*	NTLC55	<div><div></div>Regular</div> <div><div></div>Regular/Thick</div> <div><div></div>Thick</div>	6	58mm	61mm	88	12	3
Ethicon Linear Cutter 75mm*	NTLC75	<div><div></div>Regular</div> <div><div></div>Regular/Thick</div> <div><div></div>Thick</div>	6	78mm	81mm	118	12	3

\* Device is not preloaded



Description	Reload code	Tissue	Selectable closed staple height	Wire diameter	Open staple height	Qty/box
Ethicon Linear Cutter 55mm Reload	SR55	<div><div></div>Regular</div> <div><div></div>Regular/Thick</div> <div><div></div>Thick</div>	1.5mm 1.8mm 2.0mm	.23mm	4.4mm	12
Ethicon Linear Cutter 75mm Reload	SR75	<div><div></div>Regular</div> <div><div></div>Regular/Thick</div> <div><div></div>Thick</div>	1.5mm 1.8mm 2.0mm	.23mm	4.4mm	12

Device may be loaded twelve times for a maximum of twelve firings.