

Back Table Tips

Proximate® Reloadable Stapler (TX)

Note: Do not remove staple retaining cap from staged reloads until ready to install. This prevents the possibility of nuisance lock-outs and firing issues due to mixing of used and unused reloads.

Pre-Loaded Instrument

Pre-loaded instrument (out-of-box) and staged reloads with staple retaining caps on.



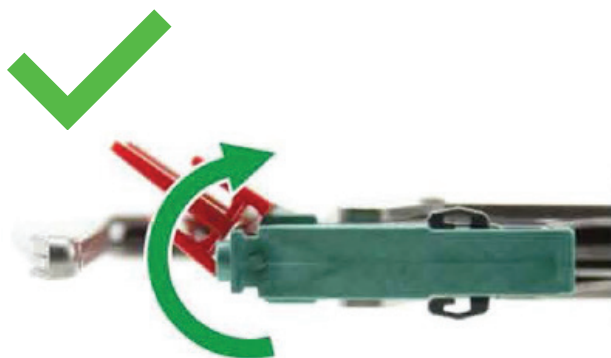
Pre-loaded instrument (out-of-box) and staged reloads with staple retaining caps removed.



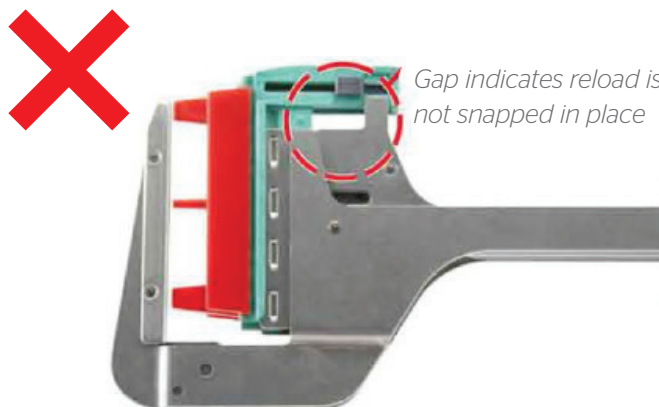
Caps should remain on until ready to reload.

Pre-Loaded Instrument Retainer Cap Removal and Checks

Proper removal of staple retaining cap from pre-loaded instrument. Push the cap to the side to remove.



Improper removal of staple retaining cap from pre-loaded instrument. DO NOT pull up on retaining cap.



Gap indicates reload is not snapped in place

Pre-Fire Check

Results of proper staple retaining cap removal.

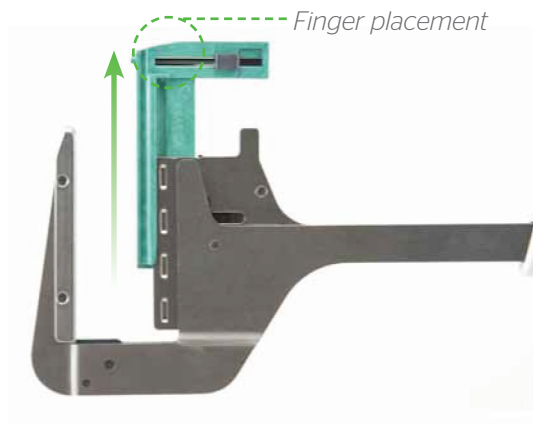


Post Firing Reload Removal and Cleaning Steps

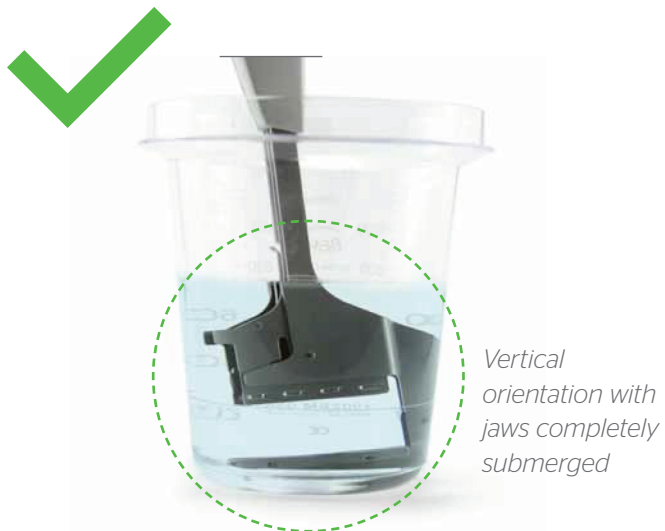
Completely fired out reload.



Reload removal.



Proper swishing method.

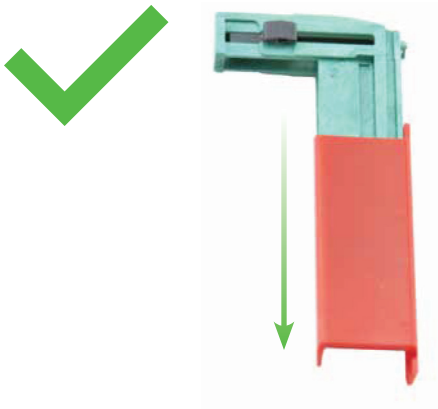


Proper anvil wiping.

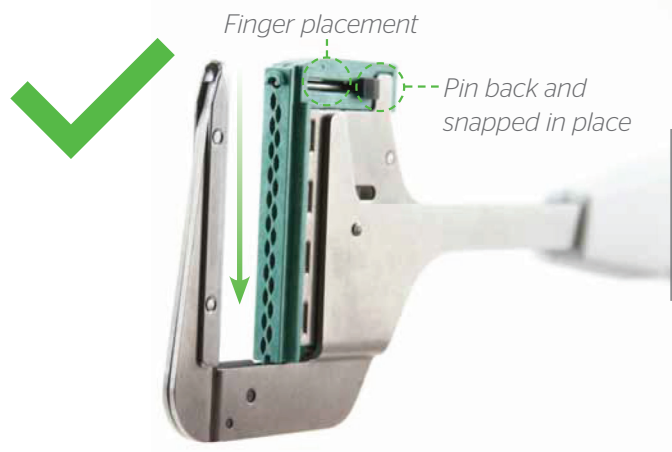


Re-Loading Instrument Steps and Checks

Proper staple retaining cap removal.
Slide the retaining cap down.



Proper reload placement into channel.



Improperly installed reload.

