



Colposcopes from ZEISS

Enabling enhanced diagnostics



We make it visible.



Early detection with ZEISS colposcopes

Reliability for your patients



ZEISS Kolposkop 150 FC



ZEISS Kolposkop E



*ZEISS Kolposkop 150 FC
with optionally integrated 1 CCD video camera*

Why should you choose a ZEISS colposcope?

High-quality optics

facilitate the assessment of anomalies in the epithelium and therefore also enable differential diagnosis.

High-performance illumination

allows you to clearly recognize color differences in the epithelium and visualize tissue patterns.

Swing-in red-free filter

enhances the contrast of the colposcope image.

Different magnification settings

offer a general overview at a low power and clear recognition of detail at high powers.

Straight, inclined or tiltable tube

enables ergonomically correct viewing conditions.

Large focusing, inclination and tilt ranges,

in addition to the variable height adjustment of the suspension arm and an ergonomically convenient handgrip, allow fast and reliable positioning of the colposcope.

Selectable working distance

with objective lenses featuring different focal lengths.

Ideal documentation for patient education

with an optionally available video camera or an adapter for a digital camera.

Attachment to examination chair or floor stand

for stationary or mobile use.

ZEISS Kolposkop 150 FC

High-quality optics

The versatile colposcope meets the critical demands made on a top-class colposcope:

- High-intensity fiber optic illumination, via integrated light guide
- Convenient, single-hand operation using the ergonomically arranged controls
- Large fine focusing range
- 5-step magnification changer
- Wide-field optics for a large field of view



- You can choose the combination best suited for your requirements:

 - Attachable to suspension mount / examination chair or floor stand
 - Straight or inclined binocular tube for convenience and comfort
- Optionally integrated MediLive® Primo 1CCD video camera for documentation of findings and patient education



Performance features of the colposcope KSK 150 FC from ZEISS	
Illumination	12 V / 10 W cold light, fiber optic illumination, adjustable
Objective lens	300 mm focusable or 250 mm focusable
Magnification	Manual magnification changer with five settings
Total magnification	3.5x–21.5x (at working distance 250 mm, 12.5x eyepieces)
Fine focusing	18 mm
Viewing tube	Inclined binocular tube, 45° or Straight, inclined, 180° tiltable binocular tube
Red-free filter	Swing-in
Suspension mount	Rolling floor stand or Suspension mount (connecting tube for examination chair)
Video camera (option)	Optionally integrated, 1CCD, Y/S (S-Video), VBS (Composite), PAL or NTSC

ZEISS Kolposkop E

Details that count

ZEISS Kolposkop E offers the features you need for use in routine colposcopy:

- Attractive price
- Ease of use and flexibility
- High optical quality

Various configurations allow the ZEISS Kolposkop E to be tailored to the requirements of your office:

- Attachable to suspension mount/ examination chair or floor stand
- Straight or inclined binocular tubes
- Fixed magnification or with 3-step magnification changer



Performance features of Kolposkop E from ZEISS

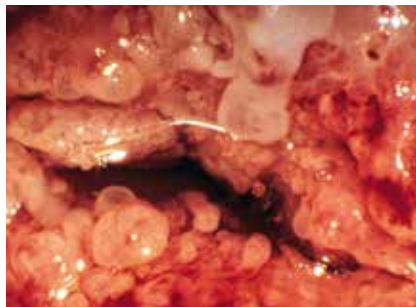
Illumination	6 V / 15 W halogen illumination
Working distance	300 mm
Magnification	3x / 5x / 8x with 3-step changer or 5x
Viewing tube	Inclined binocular tube or Straight binocular tube
Red-free filter	Swing-in Green filter, type VG6, operable from both sides
Suspension mount	Rolling floor stand or Suspension mount (connecting tube for examination chair)

Seeing and identifying

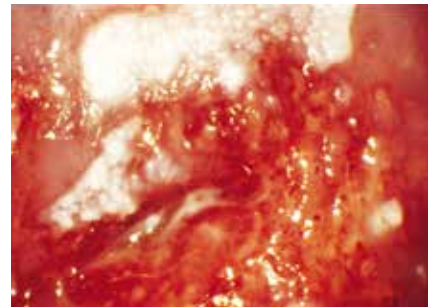
Impressive outcomes

Both skill and high-quality optics are needed to recognize precancerous changes.

ZEISS has been developing and producing world-class optical designs for over 160 years and makes the world visible when the naked eye is not enough.



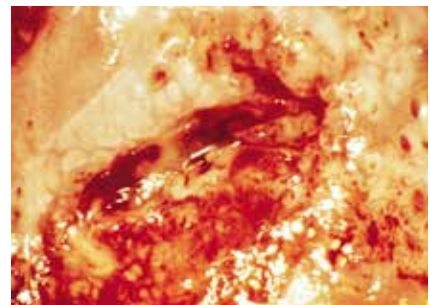
Central polypoid ectopia



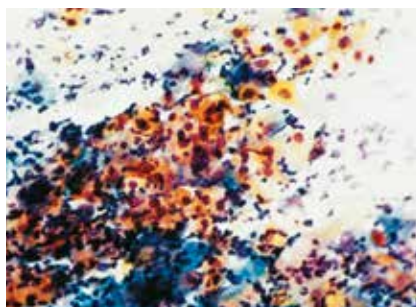
Colposcopy: Rough leukoplakia of the anterior lip, vulnerable, vascular transformation zone on the posterior lip



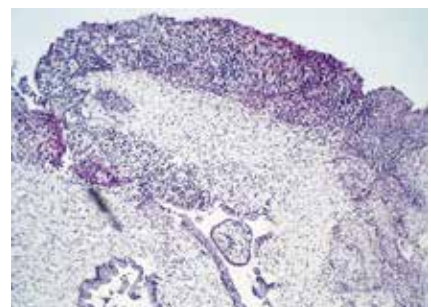
Abnormal portio with mosaic and punctuation



After the application of acetic acid: aceto-white, hollow-like mosaic on the anterior lip; vulnerable, vascular transformation zone on the posterior lip



Cytology: Signs of keratinization with dyskeratosis of all layers. Suspected CIN III, Pap IVA



Histology: CIN III

Application photos:

Dr. Peter Schomann, Lüneburg, Germany

Powerful accessories

For visualization and effective documentation of your work

Ideal video documentation

The optionally integrated video camera allows you to efficiently document important findings. The live image on the monitor enables patient education.

Digital photography

As an alternative to video documentation, digital photography is also ideal for the fast documentation of findings.



Video documentation



Digital photography: FlexioStill™ & FlexioMotion™

Visualization and Documentation

MEDIALINK™ 100 is an innovative, user-friendly solution that facilitates digital media collection. MEDIALINK 100 enables to capture images and video from several video sources and transfer them directly to your preferred storage media. Whether you choose to utilize external USB storage media or the integrated network capability, it is easy to display treatment images and videos in your office.



MEDIALINK 100



Laser attachment

Chair attachment

Using an appropriate mount, both colposcopes can be attached to examination chairs from different manufacturers. Mounts for attaching connecting tubes to examination chairs are available from the respective chair manufacturer.

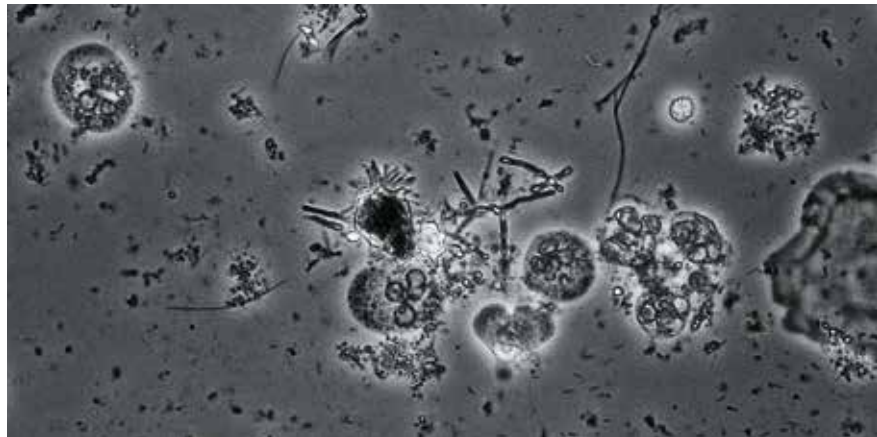
Laser attachment

An external micromanipulator can be directly attached to ZEISS Kolposkop 150 FC to perform CO₂ laser therapies.



Light microscopes from ZEISS

Make the examination complete



The early diagnosis of abnormalities of the Cervix uteri are ideally rounded off by cytological findings. The native smear is also an integral part of the patient examination: it allows fast diagnosis and hence facilitates therapy of inflammatory processes.

ZEISS light microscopes offer benefits for use in gynecology:

- High-quality optics
- Ease of use and flexibility
- Upgradeable for advanced fluorescence techniques



*Light microscope manufactured
by Carl Zeiss Microscopy GmbH.*

ZEISS OPMI pico

For routine and more intricate procedures

OPMI® pico from ZEISS is a compact, high-performance, easy-to-use surgical microscope.

- High-intensity fiber optic illumination
- Ergonomic arrangement of all controls
- Objective lens with fine focusing
- 5-step magnification changer
- Widefield optics
- Very mobile floor stand with four easy-to-move, lockable casters
- Suitable as SAD (Sexual Assault Documentation)

ZEISS OPMI pico is available in various configurations:

- Straight or inclined binocular tube for excellent ergonomics
- You can choose between three integrated HD video camera versions: HD-ready 720p, Full HD 1080p or live & streaming (Full HD 1080p) with recording license.



Performance features of S100/OPMI pico from ZEISS

Illumination	Halogen lighting or LED lighting
Objective lens	300 mm, focusable or 250 mm, focusable or Varioskop 100, focusable working distance 200–300 mm
Magnification	Manual magnification changer with five settings
Viewing tube	Straight binocular tube, f=170 mm or 45° inclined binocular tube or 180° swiveling binocular tube
Red-free filter	Swing-in
S 100 Suspension mount	Floor stand or Wall mount or Ceiling mount
Integrated HD video camera (option)	HD-ready 720p or Full HD 1080p or Live & streaming (Full HD 1080p) with recording license



The moment medical technology leads
to something very human: patients smile again.
This is the moment we work for.

// CONFIDENCE
MADE BY ZEISS



Manufacturers

KSK 150 FC, Kolposkop E and S100 / OPML pico from Carl Zeiss Meditec AG
ZEISS light microscopes from Carl Zeiss Microscopy GmbH

Carl Zeiss Meditec AG
Goeschwitzer Strasse 51–52
07745 Jena
Germany
www.meditec.zeiss.com/contacts
www.meditec.zeiss.com

Carl Zeiss Microscopy GmbH
Koenigsalle 9–12
37081 Goettingen,
Germany
www.zeiss.com/microscopy
microscopy@zeiss.com

EN_30_010_0139II SUR.5129 Rev B Printed in Germany CZ-I/2014 Poo

The contents of the brochure may differ from the current status of approval of the product in your country. Please contact our regional representative for more information. Subject to change in design and scope of delivery and as a result of ongoing technical development. OPML, Varioskop and MediLive are registered trademarks of Carl Zeiss Meditec AG. MEDIALINK, FlexioStill und FlexioMotion are trademarks of Carl Zeiss Meditec AG. Printed on elemental chlorine-free bleached paper.
© Carl Zeiss Meditec AG, 2014. All copyrights reserved.