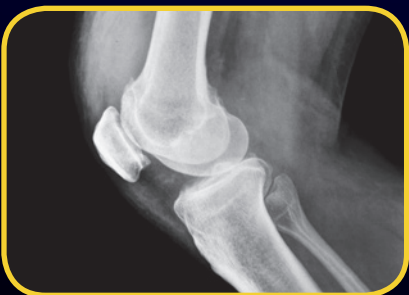
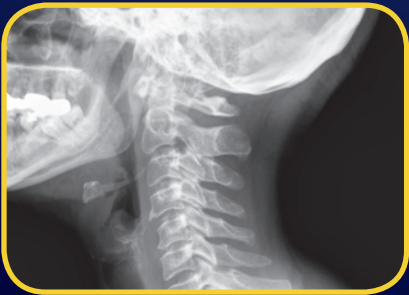


# INTEGRIS



**Integris** is MinXray's premier digital radiography system designed for clinics and hospital settings. This digital system delivers a superior image performance while still being easily transportable to the patient. The **Integris** provides the following features:

- Control x-ray generator settings from computer
- Built-in 19in touchscreen computer/monitor
- Ten programmable technique memory stations
- Collimate LED Collimator
- Wireless communication available between generator and DR

**MINXRAY<sup>®</sup> NC**

Where you care, we're there.

# INTEGRIS

## MINXRAY HF1202H

X-RAY OUTPUT	4 kW @ 100 kV 400 mA
INPUT LINE VOLTAGE	110 - 230 VAC; 50-60 Hz
TOTAL FILTRATION WITH COLLIMATOR	3.2 mm Al Equivalent
COLLIMATOR	Collimare CPL-125-MX01-C (LED type)
mA	60 mA/45 mA/33 mA @ 40 kV - 50 kV, 60 mA/45 mA/33 mA @ 52 kV - 60 kV, 55 mA 41.3 mA/30.3 mA @ 62 kV - 70 kV, 50 mA/37.5 mA/27.5 mA @ 72 kV - 80 kV, 45 mA/33.8 mA/24.8 mA @ 82 kV - 90 kV, 40 mA/30 mA/22 mA @ 92 kV - 100 kV, 30 mA 22.5 mA 16 .5 mA @ 102 kV - 110 kV, 25 mA/18.8 mA 13.8 mA @ 112 kV - 120 kV

## PERKINELMER XRPAD 4336 WIRELESS DIGITAL IMAGING PANEL

### AUTOMATIC EXPOSURE DETECTION

RECEPTOR TYPE	Direct deposition CsI Scintillator
PIXEL AREA	14 x 17 in (355 x 432 mm)
PIXEL MATRIX	3556 x 4320
PIXEL PITCH	100 µm
LIMITING RESOLUTION	5 cy/mm
ADC	16 bit
IMAGE PREVIEW	3 sec preview

### ENVIRONMENTAL

TEMPERATURE	50-95°F (10-35°C) (operating)
HUMIDITY	30-70% RH operating (non-condensing)

### POWER

BATTERY	Rechargeable battery, 53.3 Wh (qty 2)
BATTERY CHARGER	External two-bay charger 100-240 V AC (50/60 Hz)
INTERFACE/POWER UNIT	Optional XRpad IPU with external power supply 100-240 V AC, GigE and x-ray I/F

### MECHANICAL

EXTERNAL DIMENSIONS	8.4 lb (3.8 kg)
HOUSING	Carbon-fiber front & back



## Ordering Information

### The system includes:

- 1 ea. **HF1202H** High Frequency Portable X-Ray Unit
- 1 ea. XR Panel 4336 Wireless Digital Imaging Panel
- 1 ea. Integrated Onboard 19in Touchscreen Computer/Monitor
- 1 ea. MinXray DXR Imaging Software
- 1 ea. **Integriss** Mobile DR Stand
- 1 ea. Rugged Transport Case
- 1 ea. Protective Cover with Handle and Grid

System Net Weight: Approximately 216 lb (98 kg) assembled with x-ray

For more information about MinXray products, contact your local dealer or MinXray at:

**MinXray, Inc.**  
3611 Commercial Avenue  
Northbrook, Illinois 60062 USA  
1-847-564-0323

**Toll Free:** 1-800-221-2245 (U.S. & CA.)  
**E-mail:** info@minxray.com  
**Web:** www.minxray.com

# MINXRAY<sup>®</sup> INC

Where you care, we're there.

