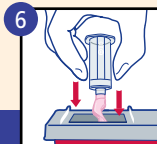
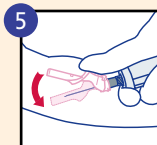
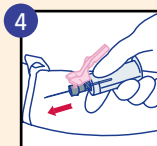
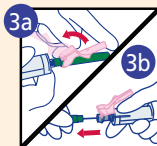
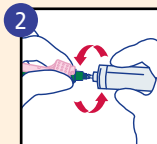
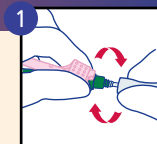


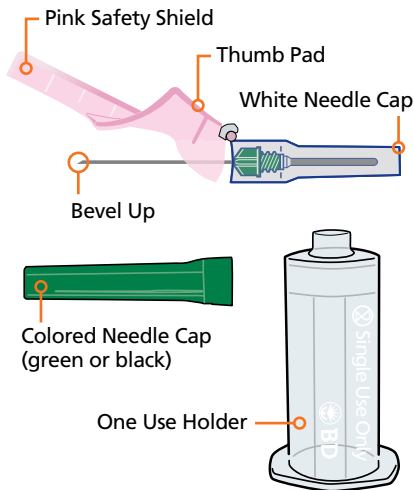
BD Vacutainer® Eclipse™ Blood Collection Needle with BD Vacutainer® One Use Holder

1. Holding both pink safety shield and colored needle cap, twist and remove white needle cap.
2. While holding the pink safety shield and the colored needle cap firmly, screw holder onto needle until it fits securely and the needle is fully seated onto the holder.
3. (a) Gently position pink safety shield straight back toward the holder.
(b) Twist and pull colored needle cap straight off.

Note: The needle bevel is always in position for venipuncture when the pink safety shield is facing up. **DO NOT** twist or rotate the pink safety shield.

4. Perform venipuncture according to your facility's established procedures.
5. Immediately after removing needle from vein, position thumb squarely on pink safety shield thumb pad and push pink safety shield forward to cover needle. An audible click may be heard. Lock shield into place and inspect.
DO NOT attempt to engage safety shield by pressing against a hard surface.
6. Discard immediately into an approved sharps disposal container.
DO NOT remove needle from holder. Dispose of the needle and holder as one unit into nearest sharps container. **DO NOT REUSE.**





Reference Numbers:

BD Vacutainer®
One Use Holder
 364815

BD Vacutainer® Eclipse™
Blood Collection
Needles

368607 21 G x 1 ¼ in.

368608 22 G x 1 ¼ in.

FOR SINGLE USE ONLY

BD Global Technical Services: 1.800.631.0174

BD Customer Service: 1.888.237.2762

www.bd.com/vacutainer

CAUTION: Handle all biologic samples and blood collection "sharps" (lancets, needles, luer adapters, and blood collection sets) according to the policies and procedures of your facility. Obtain appropriate medical attention in the event of any exposure to biologic samples (for example, through a puncture injury), since samples may transmit viral hepatitis, HIV (AIDS), or other infectious diseases. Utilize any safety-engineered feature if the blood collection device provides one. Discard all blood collection "sharps" in biohazard containers approved for their disposal.

