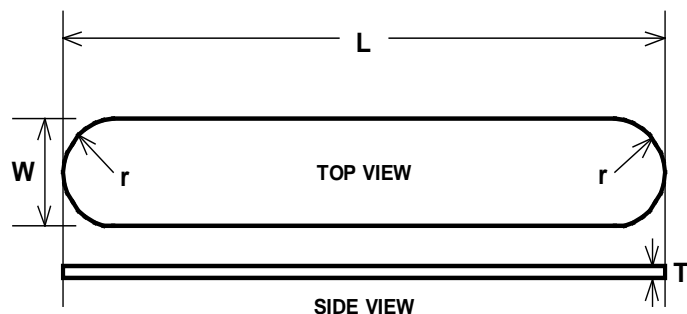


AMD-RITMED INC.			
Drawing Title	Tongue Depressor		
Technical Data Sheet			
Marketing: 7.10-1 (PS2) Date: 04-Jun-2015		Unit of Measure: Inches	Page 1 of 2
Intended Use: Medical - General Hospital			
Regulatory: FDA Class 1, FDA Product Code FMA Health Canada Class 1			
Country of Origin: China			

Company Confidential

Information contained in this document is the sole property of AMD-Ritmed Inc. Any unauthorized distribution or misuse is unlawful and may result in legal action(s).



Dimension				
Product Code	L	W	T	r
Jr. Tongue Depressor	5.50	0.625	0.062	0.313
Sr. Tongue Depressor	5.938	0.687		0.350
Super Tongue Depressor		0.750		0.375
Infant Tongue Depressor	4.50	0.375	0.078	0.187

Material	
Tongue Depressor	Paper (White) Birch
	Color: Tan with natural yellow or reddish, brown tints
	Surface: Edible Wax providing a smooth finish to the surface
Sterile Wrapping Paper	<u>Non Latex</u> , Paper and Plastic film
Inner Box	<u>Non Latex</u> , Box
Case	<u>Non-Latex</u> Corrugated Board Box

AMD-RITMED INC.			<div>Company Confidential</div> <div>Information contained in this document is the sole property of AMD-Ritmed Inc. Any unauthorized distribution or misuse is unlawful and may result in legal action(s).</div>
Drawing Title	Tongue Depressor		
Technical Data Sheet			
Marketing: 7.10-1 (PS2)	Unit of Measure: Inches	Page 2 of 2	

Product Configuration Table													
Product		Product Type					Packaging (Refer to Note 1)				Labeling (Refer to Note 1)		
Product Code	Grade Code (Refer to Note 2)	Infant	Junior	Senior	Super	N=Non Sterile S=Sterile	Individual Wrap	Inner Container (P = Plastic Bag)	Flavored	Pack (Outer/Middle/Inner Container Quantities)	Paper (Individual)	Inner Box	Case (Outer Box)
50000	M		√			N		√		10/500		P	L
51100	M	√				N		√		10/1000		P	L
52000	M			√		N		√		10/500		P	L
52100	M			√		N		√		12/100		P	L
55100	M		√			N	√	√		10/250/1	N	P	L
55600	M			√		N	√	√		10/250/1	N	P	L
56900	M			√		S	√	√		10/100/1	P	P	L
57000	M		√			S	√	√		10/100/1	P	P	L
58000	M	√				S	√	√		10/100/1	P	P	L
58100	M		√			N	√	√	Cherry	10/100/1	P	P	L
58200	M		√			N	√	√	Grape	10/100/1	P	P	L
400026	M			√		N		P		1/5000			L

Note1	All tongue depressors are packed in an outer corrugated case (box).			
	Labeling Codes	P = Printed on Container	L = Adhesive Backed, Printed Label	N = No Label, Plain Container
Note 2	Grade Code	M = Medical		