



UTF STEM  
reduced



# Refined Proximal Width

- Proximal width with 1 mm increment in most popular sizes to gradually tighten fitting different metaphyseal width.
- Refined proximal width will help surgeons easily choose a proper proximal fitting for each patient.

Stem Size	Proximal	Increment
#1	25.0	—
#2	26.5	1.5 mm
#3	27.5	1.0 mm
#4	28.5	1.0 mm
#5	29.5	1.0 mm
#6	30.5	1.0 mm
#7	31.5	1.0 mm
#8	32.5	1.0 mm
#9	34.0	1.5 mm
#10	35.5	1.5 mm
#11	37.5	2.0 mm

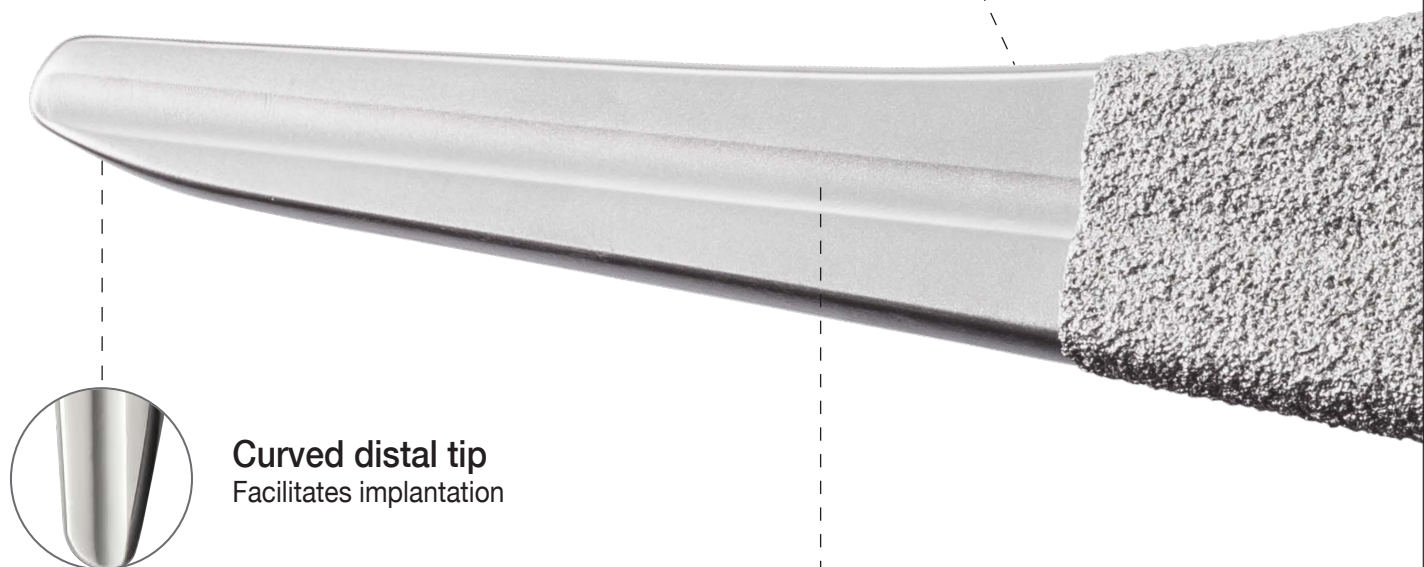


# The Answer for All Kinds of Femora

- Proximal fixation
- Simple surgical procedure
- Bone preservation

## Dual taper design

Offers bony compaction and perfectly fit



**Curved distal tip**  
Facilitates implantation

## Stem flute

Provides blood flow and reduces stem stiffness







# Instrumentations

The UTF stem system provides specially designed devices featuring easy-to-use and time-saving.

## Quick connect holder

Facilitates initial stem insertion



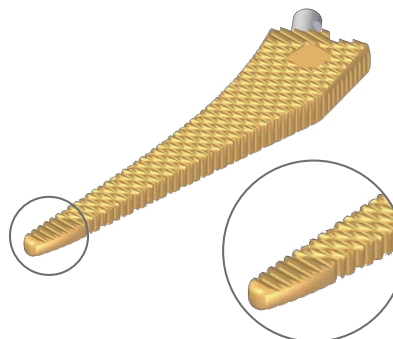
## Neck trial with a locking c-rim

Benefits simple assembly



## Broach

Smoothed tip directs correct broach alignment and prevents femoral fracture



# Instrumentations

Unique designed instrumentations enable many surgical approaches as the surgeon needs.

## Broach handle

Adapts to different approach



Standard



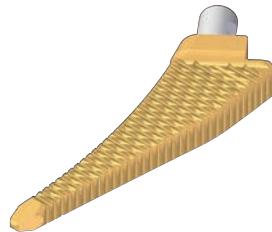
Offset



Dual offset

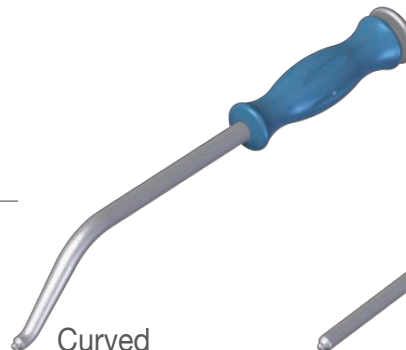
## Start broach

Helps initial canal opening

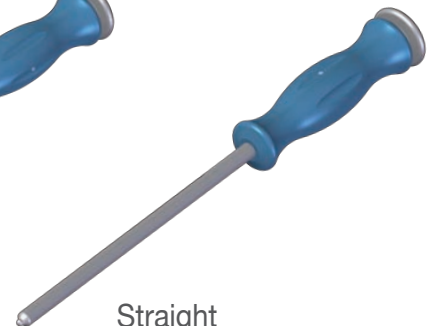


## Stem impactor

Adapts to different approach

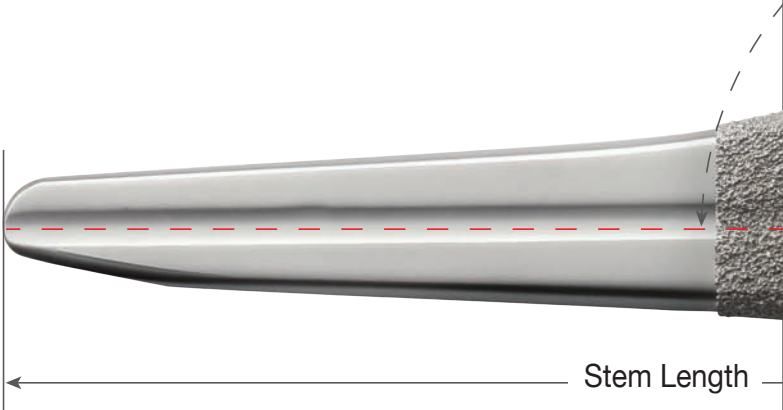


Curved



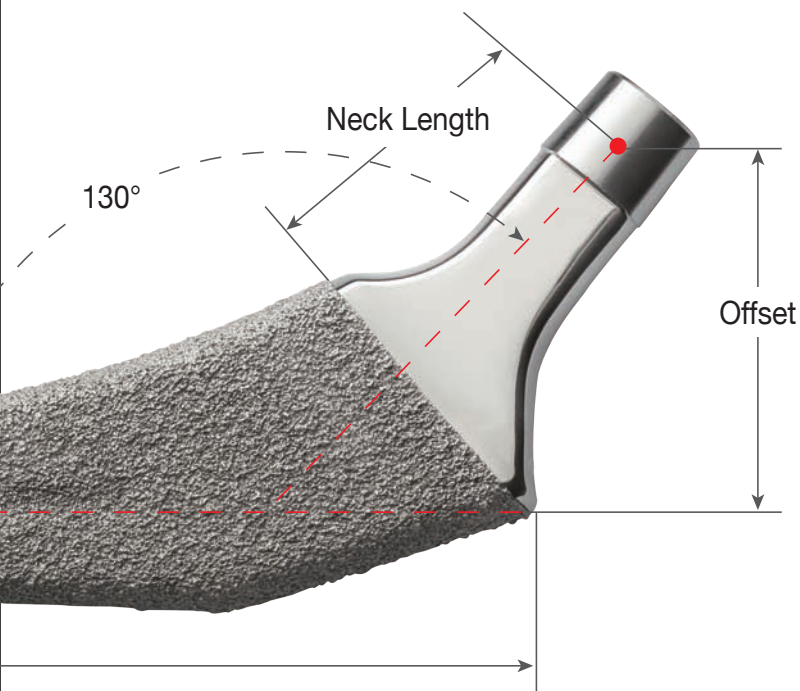
Straight

# Stem Specifications



Metal Head		28 mm 32 mm 36 mm											
		-3 mm		+0 mm		+2.5 mm		+5 mm		+7.5 mm		+10 mm	
Size	Stem Length	Offset	Neck Length	Offset	Neck Length	Offset	Neck Length	Offset	Neck Length	Offset	Neck Length	Offset	Neck Length
Standard Offset, #1	125	30	25	32	28	34	30.5	36	33	38	35.5	40	38
Standard Offset, #2	128	31	26	33	29	35	31.5	37	34	39	36.5	41	39
Standard Offset, #3	131	32	27	34	30	36	32.5	38	35	40	37.5	42	40
Standard Offset, #4	134	33	28	35	31	37	33.5	39	36	41	38.5	43	41
Standard Offset, #5	137	34	29	36	32	38	34.5	40	37	42	39.5	44	42
Standard Offset, #6	140	35	30	37	33	39	35.5	41	38	43	40.5	45	43
Standard Offset, #7	142	36	31	38	34	40	36.5	42	39	44	41.5	46	44
Standard Offset, #8	144	37	32	39	35	41	37.5	43	40	45	42.5	47	45
Standard Offset, #9	146	37	32	39	35	41	37.5	43	40	45	42.5	47	45
Standard Offset, #10	149	39	34	41	37	43	39.5	45	42	47	44.5	49	47
Standard Offset, #11	152	40	35	42	38	44	40.5	46	43	48	45.5	50	48
High Offset, #1	125	36	29	38	32	40	34.5	42	37	44	39.5	46	42
High Offset, #2	128	37	30	39	33	41	35.5	43	38	45	40.5	47	43
High Offset, #3	131	38	31	40	34	42	36.5	44	39	46	41.5	48	44
High Offset, #4	134	39	32	41	35	43	37.5	45	40	47	42.5	49	45
High Offset, #5	137	41	34	43	37	45	39.5	47	42	49	44.5	51	47
High Offset, #6	140	42	35	44	38	46	40.5	48	43	50	45.5	52	48
High Offset, #7	142	43	36	45	39	47	41.5	49	44	51	46.5	53	49
High Offset, #8	144	44	37	46	40	48	42.5	50	45	52	47.5	54	50
High Offset, #9	146	45	37	47	40	49	42.5	51	45	53	47.5	55	50
High Offset, #10	149	47	39	49	42	51	44.5	53	47	55	49.5	57	52
High Offset, #11	152	48	40	50	43	52	45.5	54	48	56	50.5	58	53





Delta-Ceramic Head		28 mm		32 mm		36 mm		32 mm		36 mm		40 mm	
		-3 mm		+1 mm		+5 mm		+8 mm		+9 mm			
Size	Stem Length	Offset	Neck Length	Offset	Neck Length	Offset	Neck Length	Offset	Neck Length	Offset	Neck Length	Offset	Neck Length
Standard Offset, #1	125	30	25	33	29	36	33	38	36	39	37		
Standard Offset, #2	128	31	26	34	30	37	34	39	37	40	38		
Standard Offset, #3	131	32	27	35	31	38	35	40	38	41	39		
Standard Offset, #4	134	33	28	36	32	39	36	41	39	42	40		
Standard Offset, #5	137	34	29	37	33	40	37	42	40	43	41		
Standard Offset, #6	140	35	30	38	34	41	38	43	41	44	42		
Standard Offset, #7	142	36	31	39	35	42	39	44	42	45	43		
Standard Offset, #8	144	37	32	40	36	43	40	45	43	46	44		
Standard Offset, #9	146	37	32	40	36	43	40	45	43	46	44		
Standard Offset, #10	149	39	34	42	38	45	42	47	45	48	46		
Standard Offset, #11	152	40	35	43	39	46	43	48	46	49	47		
High Offset, #1	125	36	29	39	33	42	37	44	40	45	41		
High Offset, #2	128	37	30	40	34	43	38	45	41	46	42		
High Offset, #3	131	38	31	41	35	44	39	46	42	47	43		
High Offset, #4	134	39	32	42	36	45	40	47	43	48	44		
High Offset, #5	137	41	34	44	38	47	42	49	45	50	46		
High Offset, #6	140	42	35	45	39	48	43	50	46	51	47		
High Offset, #7	142	43	36	46	40	49	44	51	47	52	48		
High Offset, #8	144	44	37	47	41	50	45	52	48	53	49		
High Offset, #9	146	45	37	48	41	51	45	53	48	54	49		
High Offset, #10	149	47	39	50	43	53	47	55	50	56	51		
High Offset, #11	152	48	40	51	44	54	48	56	51	57	52		



Standard Offset	Size
1106-3001	#1
1106-3002	#2
1106-3003	#3
1106-3004	#4
1106-3005	#5
1106-3006	#6
1106-3007	#7
1106-3008	#8
1106-3009	#9
1106-3010	#10
1106-3011	#11



High Offset	Size
1106-3201	#1
1106-3202	#2
1106-3203	#3
1106-3204	#4
1106-3205	#5
1106-3206	#6
1106-3207	#7
1106-3208	#8
1106-3209	#9
1106-3210	#10
1106-3211	#11



## Office

### ■ Taiwan

12F, No. 80, Sec. 1, Chenggong Rd, Yonghe Dist.,  
New Taipei City 23452, Taiwan  
Tel: +886 2 2929-4567 Fax: +886 2 2922-4567

### ■ USA

UOC USA Inc.

20 Fairbanks, Suite 173  
Irvine, CA 92618

Tel: +1 949-328-3366 Fax: +1 949-328-3367

### ■ China

United Medical Instrument Co. Ltd.

7F, No.1405, Gonghexin Road, Shanghai, China

Tel: +86 21 3661-8055 Fax: +86 21 6628-3031

### ■ EU Representative

mdi Europa GmbH

Langenhagener Strasse 71, 30855 Langenhagen, Germany

Tel: +49-511-3908 9530 Fax: +49-511-3908 9539



All Rights Reserved, © 2013 United Orthopedic Corp.  
www.uoc.com.tw

01PS-B-14-01