

hMatrix[®] ADM



sterile biologic scaffolds



proven clinical outcomes



novel biologic technology

Characteristics of hMatrix® ADM



Sterility assurance level (SAL) 10^{-6}



Flexible matrix allows for precise placement



Superior suture retention strength



Stored and distributed as a frozen product



Acellular dermal matrix (ADM)



5 year shelf life



Lower inflammatory response vs. competitors



Proven clinical results

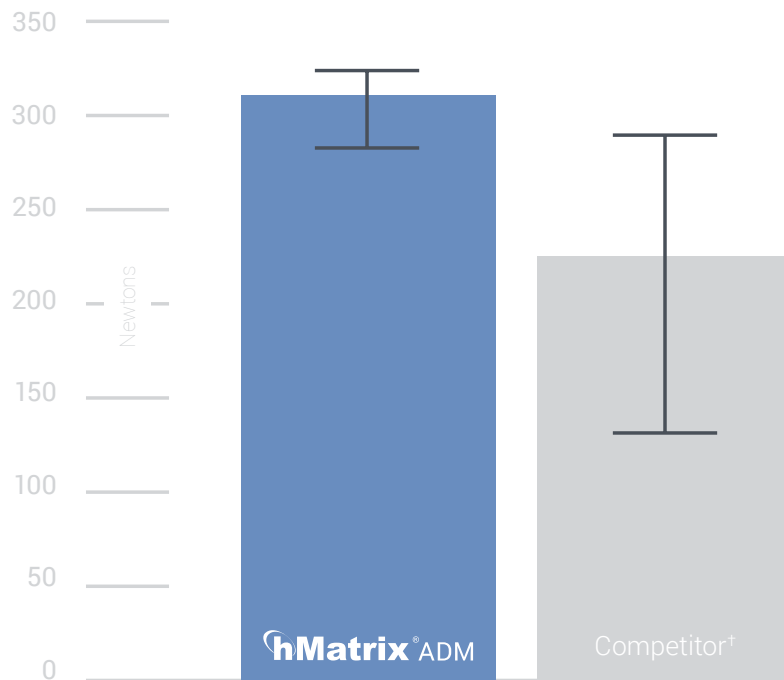
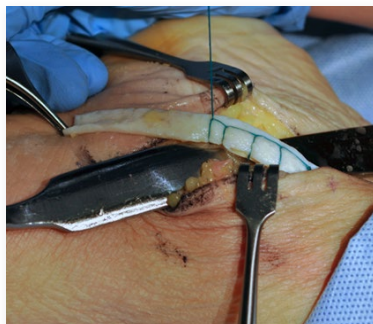
Benefits

hMatrix® Acellular Dermal Matrix (ADM) is derived from donated human skin. The dermis is separated and processed using a proprietary method that renders the dermis acellular. This minimizes the chance of eliciting an inflammatory response after implantation. This processing also renders the collagen and elastin matrix highly biocompatible. Preclinical data indicates that hMatrix® ADM has the potential to expedite the healing process. hMatrix® ADM is provided sterile, greatly reducing the risk of infection.

Indications

hMatrix® ADM is indicated for homologous use only, specifically for the replacement or reinforcement of damaged integumental tissue.

hMatrix® ADM applications include use as a wound covering and for use in supplemental support, reinforcement, or covering of tendons or periosteum.



Superior Suture Retention Strength

Test results demonstrate an average suture retention strength of 310 Newtons (n=12) for hMatrix® ADM compared to 229 Newtons (n=10) for a leading competitive product. Overall, hMatrix® ADM was 35% stronger than the leading competitor with more consistent suture retention strength.

† Barber FA, Herbert MA, Coons DA (2006) Tendon Augmentation Grafts: Biomechanical Failure Loads and Failure Patterns. Arthroscopy: The Journal of Arthroscopic and Related Surgery Vol 22, No 5 (May): 534-538.

hMatrix® ADM

208031	hMatrix® ADM 4.0 cm x 2.0 cm, Thin
208032	hMatrix® ADM 5.0 cm x 4.0 cm, Thin
208033	hMatrix® ADM 7.0 cm x 5.0 cm, Thin
208034	hMatrix® ADM 10.0 cm x 5.0 cm, Thin
208035	hMatrix® ADM 4.0 cm x 2.0 cm, Medium
208036	hMatrix® ADM 5.0 cm x 4.0 cm, Medium
208037	hMatrix® ADM 7.0 cm x 5.0 cm, Medium
208038	hMatrix® ADM 10.0 cm x 5.0 cm, Medium
208039	hMatrix® ADM 4.0 cm x 2.0 cm, Thick
208040	hMatrix® ADM 5.0 cm x 4.0 cm, Thick
208041	hMatrix® ADM 7.0 cm x 5.0 cm, Thick
208042	hMatrix® ADM 10.0 cm x 5.0 cm, Thick
208231	hMatrix® ADM 4.0 cm x 2.0 cm, Thin, Meshed (1:1)
208232	hMatrix® ADM 5.0 cm x 4.0 cm, Thin, Meshed (1:1)
208233	hMatrix® ADM 7.0 cm x 5.0 cm, Thin, Meshed (1:1)
208234	hMatrix® ADM 10.0 cm x 5.0 cm, Thin, Meshed (1:1)

Visual Representation of Graft Thickness

Thin	< 1 mm		*
Medium	1 – 2 mm		*
Thick	> 2 mm		*

* Thicknesses shown are meant to indicate the expected range of each thickness.

Actual thickness may vary within this range.

5300B 01/2014 © 2012 – 2014 Bacterin International, Inc. All Rights Reserved.

Records on file at Bacterin International, Inc.

hMatrix® is a registered trademark of Bacterin International, Inc.



600 Cruiser Lane, Belgrade, MT 59714, USA



P: 1.888.886.9354



F: 1.406.388.3380



cs@bacterin.com



www.bacterin.com