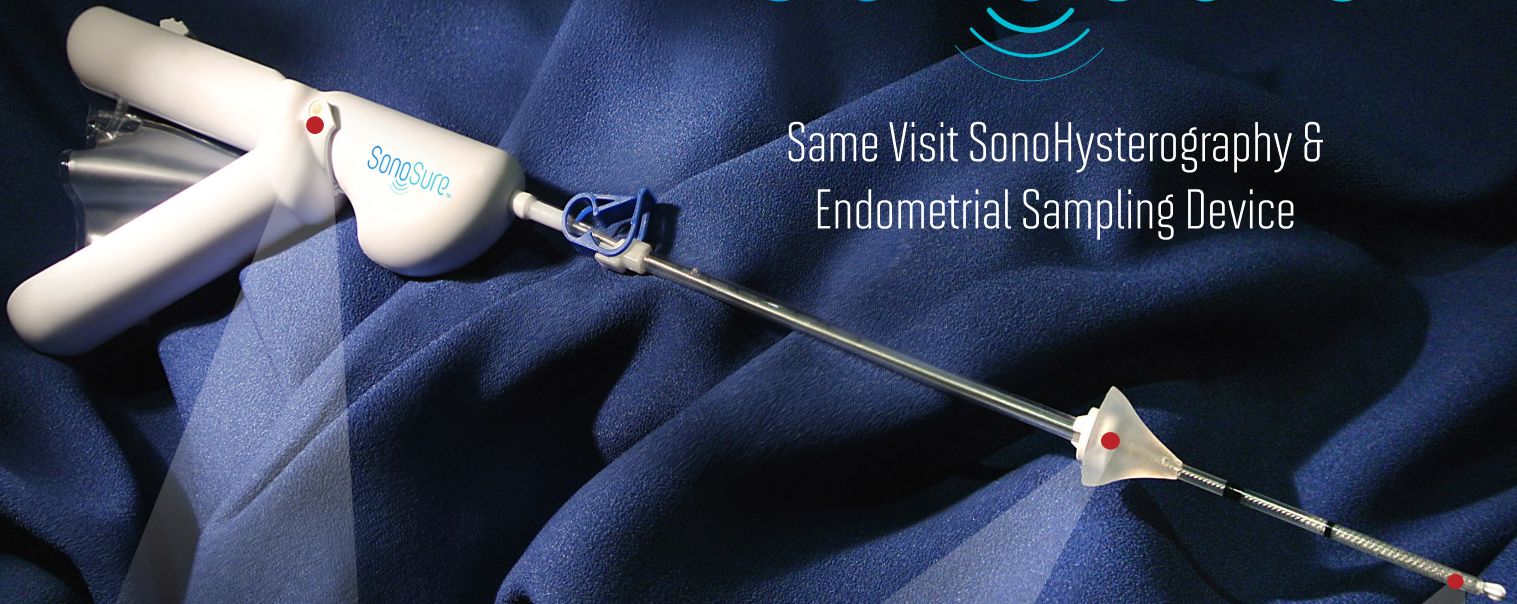


# SonoSure™

Same Visit SonoHysteroGRAPHY &  
Endometrial Sampling Device



## SonoSure™ Features:

### Single Handed Controls

- Maintain cervical seal
- Infuse up to 40 cc without refilling
- Release cervical seal
- Endometrial sample brush extension & rotation

### Shapeable Catheter / Soft Acorn Tip

- Bendable catheter tip for anteversion or retroversion placement
- Provides uterine distention upon infusion
- Release for draining without forceps

### Echogenic Tip and Brush

- View catheter tip during insertion
- View sampling brush during placement
- Blunt tip to avoid perforation

The SonoSure™ SonohysteroGRAPHY and Endometrial Sampling Device is indicated for use to access the uterine cavity for Saline Infusion SonohysteroGRAPHY (SIS) and to obtain endometrial biopsy, if indicated, utilizing the same device.



# Consolidating the SIS & ES Visits

## Device and Room Set-Up

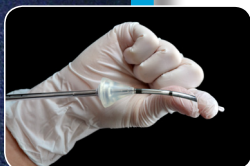


1. Procedure Tray Set-Up - 40 cc sterile saline, syringe, open-sided speculum, and specimen container. Tenaculum and specimen spatula, and bandage scissors (as needed).
2. Fill fluid bag with 40 cc sterile saline and purge catheter of all air by holding upright and squeezing the handle.

## Saline Infusion SonoHysteroGRAPHY (SIS)



1. Retract brush into the catheter and shape the catheter tip as needed.
2. Set the acorn tip distance by advancing it to the distal end and pulling back until the locator circle is at the desired length.
3. Insert the SonoSure device into the uterus taking care not to perforate the uterus.
4. Instill saline through the catheter and perform SonohysteroGRAPHY procedure.



## Endometrial Sampling (ES)



1. Retract the cervical seal and allow the uterine cavity to drain of saline. If uterine cavity is not seen under ultrasound to fully drain, gently palpate uterus manually or with ultrasound probe.
2. In the sagittal view, locate the catheter/brush tip at internal cervical os and extend the sampling brush by sliding it forward. Observe the brush to occupy the uterine cavity.
3. Rotate the brush 360 degrees in each direction, or 4-5 times in one direction.
4. Retract the brush to trap the endometrial sample.
5. Immediately immerse the catheter tip in cytology preserve – push the brush forward into the preserve and then in and out as needed to clean it of adherent cells and tissues. Alternatively, the brush can be detached by cutting it off and placing it in the cytology solution.



## Contraindications:

This device should not be used in the presence of an active pelvic infection, acute pelvic inflammatory disease, a blood clotting disorder, sexually transmitted disease, history of uterine perforation, recent cesarean section, or active or suspected pregnancy.

CAUTION: Avoid contact with potential ignition sources. Do not use in the presence of flammable anesthesia.

### Possible risks associated with SonoSure™

Adverse reactions to uterine procedures may include uterine perforation, infection, pain and cramping, uterine cramping, vasovagal syncope, and vaginal bleeding. Note: The device is intended for single use only. The device is sterile if the package is unopened or undamaged. Do not open the package or use the device if the package is found opened or damaged.

To place an order for SonoSure please email your completed order form to:  
Orders@CrossBayMedicalInc.com OR contact us directly at (844) 722-6462

**CrossBay™**  
WOMEN

CrossBay Medical Inc. 703 Sandoval Way, Hayward, CA 94544

MKT-001 Rev. A