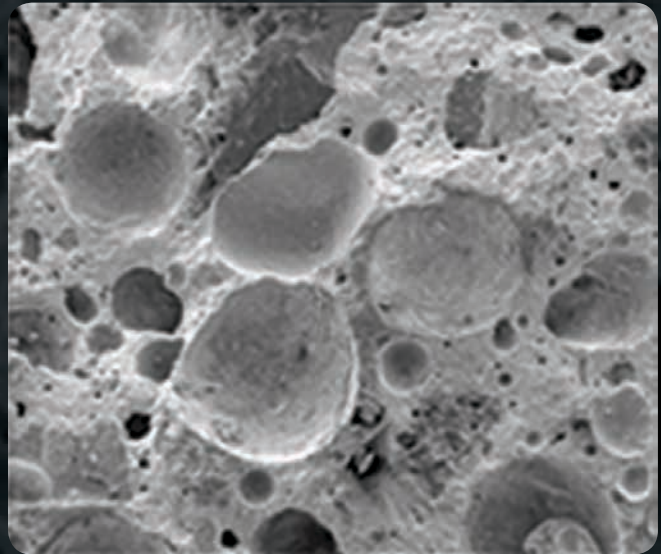


OsteoVation® QWIK

Bone Void Filler



**IMPACT & INJECT
FORMULATIONS**

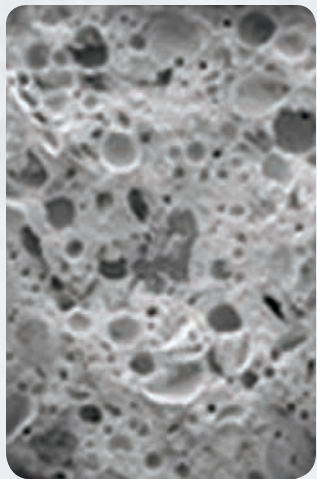


Rethinking Possibilities, Reshaping Lives

Introduction

OsteoVation QWIK is a bone void filler consisting of a proprietary composite of calcium phosphate and calcium sulfate granules. The unique formulation creates a macroporous construct, allowing **faster remodeling**, while maintaining **targeted compressive strength**. In addition to promoting faster bony ingrowth, the system offers surgeons an efficient surgical technique. **Impact** or **Inject** formulas are available and provide options for traditional open or minimally-invasive surgical procedures. Both formulations are **osteoconductive** and provide a scaffold to enhance the bone during the healing process.

Key Indications



Proximal Humerus Fractures
Backfill After Bone Grafting
Distal Radius Fractures
Bone Tumors and Cysts
Tibial Plateau Fractures
Calcaneus Fractures
Hardware Removal
Osteolysis from Total Joints
Osteotomies



Advantages

Macroporous

The unique formulation creates a rapid generation of porosity that allows faster ingrowth of host bone.

Controlled Remodeling

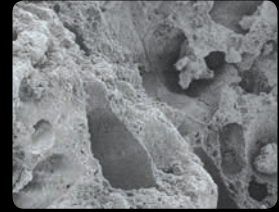
OsteoVation QWIK features an optimized ratio of calcium phosphate and calcium sulfate granules which allows controlled remodeling while maintaining strength during the bone healing process.

Fast-Setting Isothermic

OsteoVation QWIK is designed to set quickly once implanted in a wet environment at the patient's normal body temperature. OsteoVation QWIK is also isothermic and does not damage adjacent tissue as it sets.

Impact & Inject Formulations

Impact and Inject formulations accommodate traditional open or minimally-invasive surgical procedures.

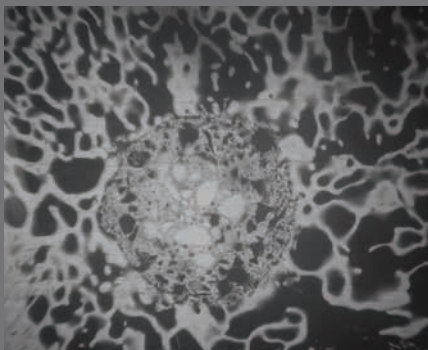


Magnification highlighting porosity

Animal Study

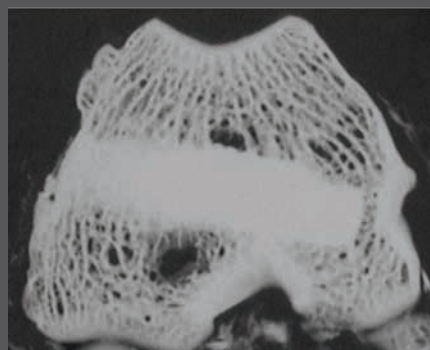
Micro x-ray analysis was performed following implantation of OsteoVation QWIK in sheep femurs and tibiae (Fig. 1). The results were then compared to a calcium phosphate bone void filler (Fig. 2) and a calcium sulfate bone void filler (Fig. 3) at four weeks post-implantation.

OsteoVation QWIK



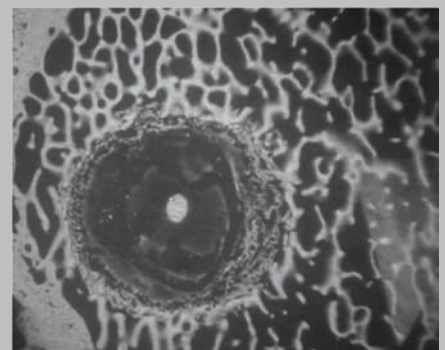
New bone formation can be observed at the periphery and within porous areas of the implant.
(Fig.1)

Calcium Phosphate



Excellent direct bone apposition to the cement, but very little remodeling.
(Fig.2)

Calcium Sulfate



Almost an entire implant has been resorbed with very little new bone generation.
(Fig.3)

* The study confirms the biocompatibility, resorption and bone formation following implantation of **OsteoVation QWIK**.

Complementary Products:



fps™
foot plating system



ExtremiFix™
2.0mm, 2.4mm, 3.0mm, 4.0mm
Cannulated Screw System



hps™
hand plating system



Large Cannulated Screws
6.5mm and 7.3mm cannulated screw system



OSTEOMED
3885 Arapaho Rd.
Addison, TX 75001
Customer Service: 800.456.7779
Customer Service Fax: 800.390.2620

www.osteomed.com

P/N 030-1796 Rev.A