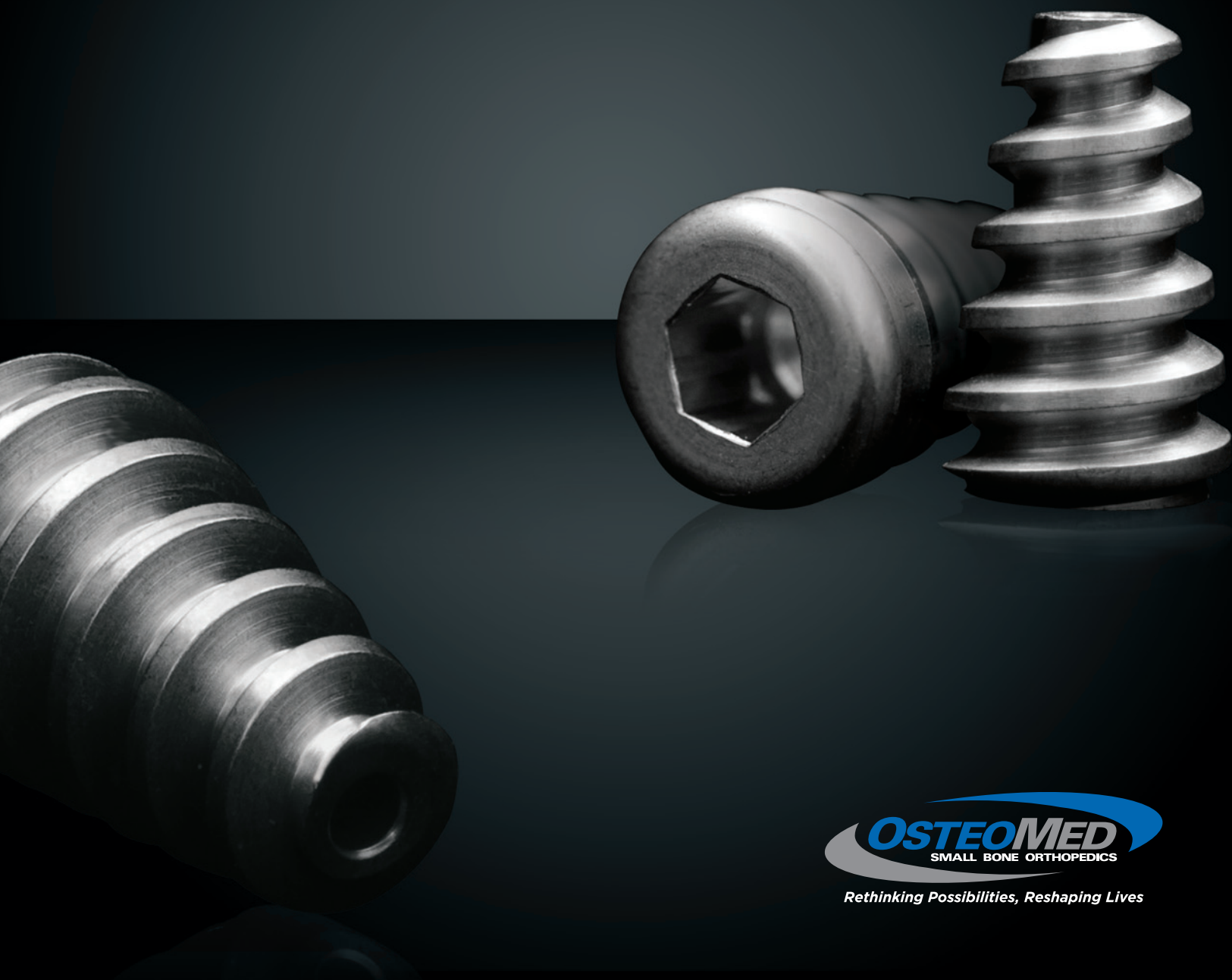


# TALAR-FIT™

SUBTALAR ARTHROEREISIS IMPLANT



# Advantages

## FIVE IMPLANT SIZES

Multiple implant options accommodate various patient anatomies in pediatric and adult patients

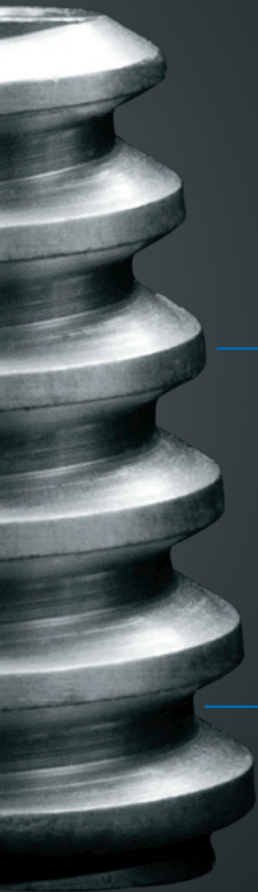
## ANATOMICAL CONE-SHAPE

Provides superior blockage of the talus and minimizes implant extrusion



## BLUNT THREADS

Reduces bone impingement and irritation

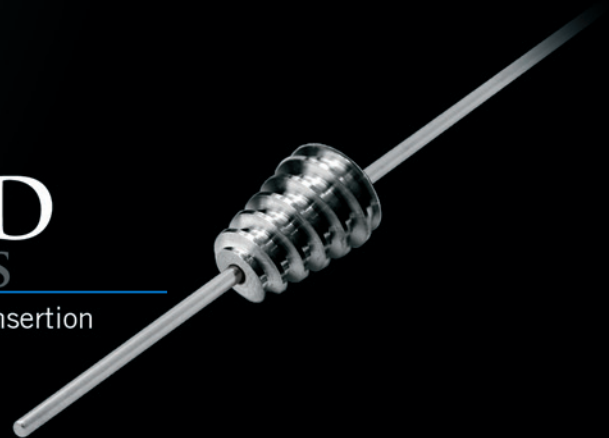


## DEEP THREAD PATTERN

Accommodates tissue ongrowth for enhanced stability

## CANNULATED IMPLANTS

Facilitates accurate implant insertion and positioning



## MINIMALLY- INVASIVE

Surgical technique does not require bone or cartilage resection

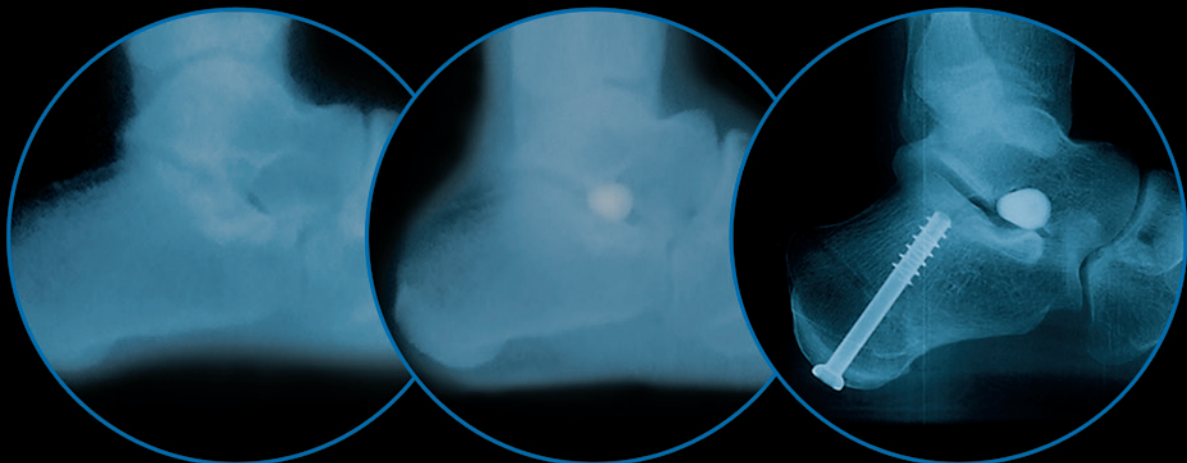
# Anatomically Correct Subtalar Implant



The Talar-Fit Subtalar Arthroereisis Implant features an **anatomical cone-shaped** tip that provides superior blockage of the talus and minimizes implant extrusion. The system offers surgeons a simple, **minimally-invasive** procedure when stabilization of the subtalar joint is required.

## Indications

Indicated for use in the treatment of the **hyperpronated** foot and **stabilization** of the subtalar joint. **Talar-Fit** is designed to block the anterior and inferior displacement of the talus, thus allowing normal subtalar **joint motion** but blocking excessive pronation and the resulting sequela.



## Complementary products:



**fps**<sup>™</sup>  
foot plating system



**ExtremiFix**<sup>™</sup>  
2.0mm, 2.4mm, 3.0mm, 4.0mm  
Cannulated Screw System



**Large Cannulated Screws**  
6.5mm and 7.3mm Cannulated Screw System



**OSTEOMED**  
3885 Arapaho Rd.  
Addison, TX 75001  
Customer Service: 800.456.7779  
Customer Service Fax: 800.390.2620

[www.osteomed.com](http://www.osteomed.com)

P/N 030-1440 Rev. C