

fpsTM

foot plating system

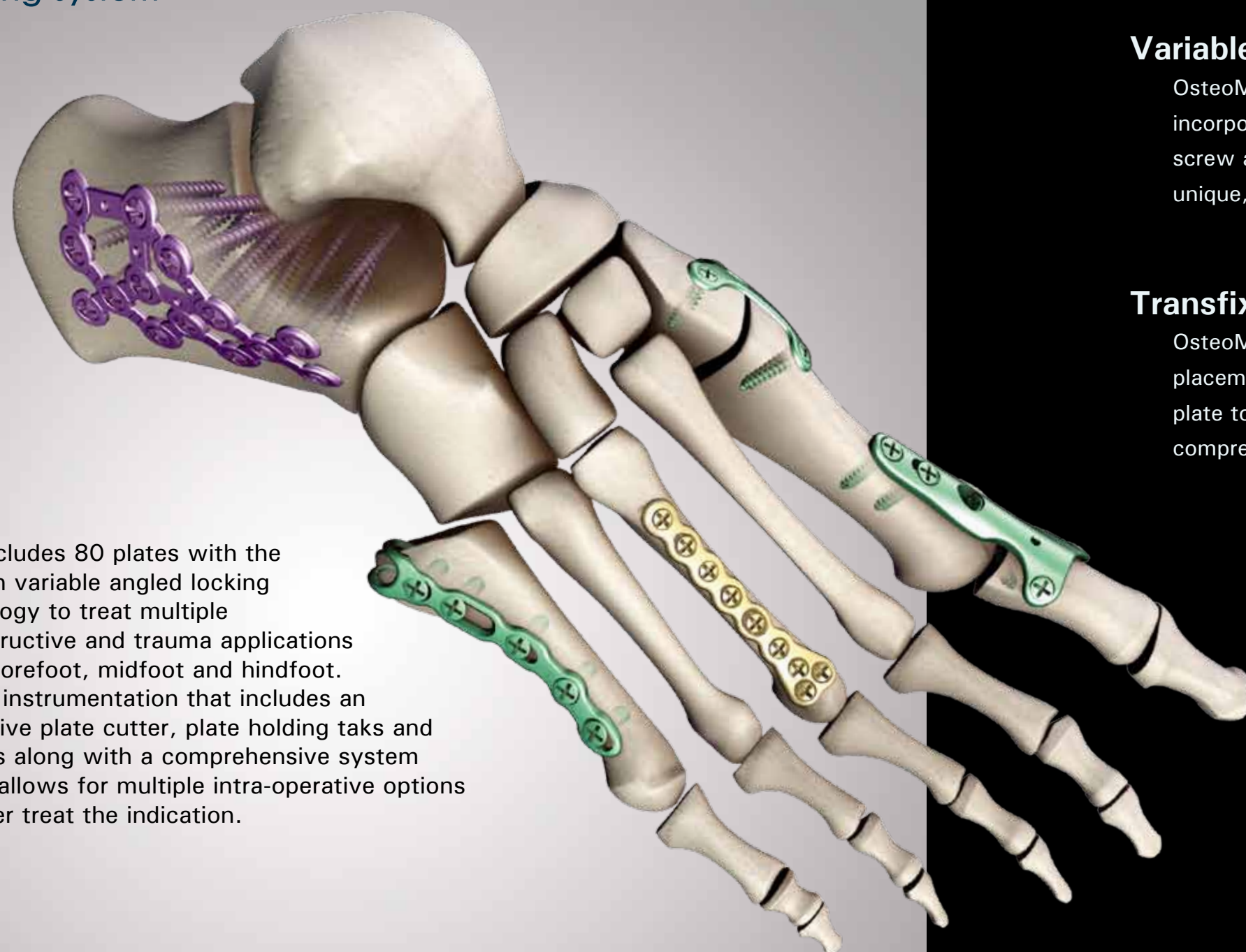


Rethinking Possibilities, Reshaping Lives



foot plating system

indication focused comprehensive SOLUTIONS



fps™ includes 80 plates with the latest in variable angled locking technology to treat multiple reconstructive and trauma applications of the forefoot, midfoot and hindfoot. Unique instrumentation that includes an innovative plate cutter, plate holding taks and reamers along with a comprehensive system design allows for multiple intra-operative options to better treat the indication.

Stable Anatomic Reduction

The latest in plate and screw technology

Variable Angled Locking

OsteoMed's proprietary angled locking technology incorporates threads on the head of the screw and the interior of the plate hole resulting in a unique, strong and rigid construct.

Transfixation Technology

OsteoMed's Transfixation technology allows for placement of an interfragmentary screw through the plate to prevent plantar gapping. Plates also include compression holes for additional stability.



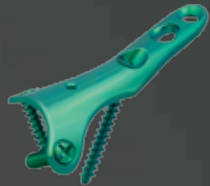
fps advantages

Solutions designed for the indication

fps™ plates are designed to focus on the needs of specific indications.

Hallux Rigidus

The 1st MTP fusion plate addresses the difficulty in anatomic reconstruction of the hallux through its 10 degree dorsiflexion and 10° valgus curvature along with the ability to prevent plantar gapping by compressing the joint and inserting a transfixation screw.



5th Metatarsal Fracture

The hooks on the fps 5th Metatarsal Fracture Plate provide stability and reduction to difficult Jones 1, 2 and 3 type fractures. Compression holes and a positioning hole along the anatomic curvature of the plate provide for a stable low profile construct.



Hallux Valgus/Varus and Arthritis / Instability of the Metatarsal Cuneiform Joint

The fps™ Lapidus Plate allows for a more medial approach and a compression hole to prevent gapping of the joint. The 2.7 step plates allow for a more dorsal approach and restoration of the natural declination angle if necessary.



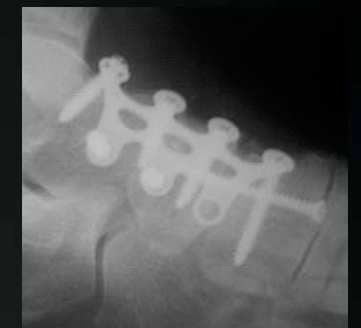
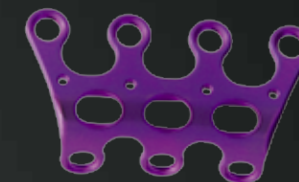
Metatarsal Fractures / TMT Fusion

The subcondylar plate's 3 distal holes allow for multiple points of fixation at the metaphysis of the bone.



Medial Column Fusion

Unique and anatomically designed plate with compression holes to fuse the medial column.



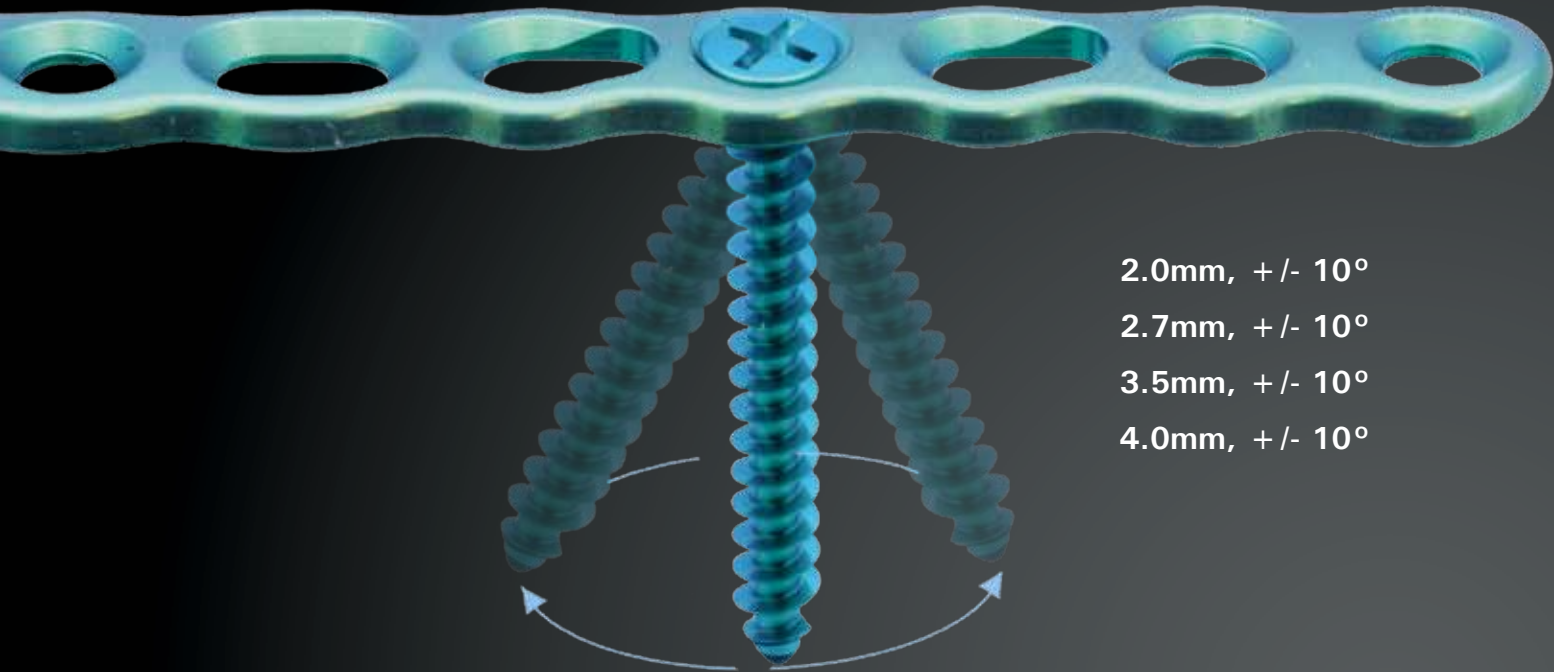
Calcaneal Fractures

fps™ calcaneal plates offer a low profile design that provides structure and strength throughout the posterior facet.



plates and screws

- Non locking and variable angled locking screws in 1 system
- Compression hole options
- Color coded plates and screws : 2.0mm Bronze, 2.7mm Green, 3.5/4.0mm Purple
- Unique and stable variable angled locking technology
- Low profile plate and screw interface
- Transfixation screw technology



comprehensive plate selection

80 Plates to choose from



procedures

	Straight, L, T, Oblique Subcondylar 1st MTP Fusion Wedge Step H Hook Lapidus Medial Column Calcaneal Navicularcuneiform plate Solid & Cannulated Screws*											
Opening Wedge Osteotomy												
Closing Wedge Osteotomy												
1st MTP Fusion												
Lapidus Procedure												
5th Metatarsal Osteotomy												
Jones Fracture												
Metatarsal Fractures												
Lisfranc Injury												
Medial Cuneiform												
Opening Wedge Cuboid Fracture												
Cotton Procedure												
Medial Column Fusion												
Navicular Fracture												
Talonavicular Fusion												
Navicularcuneiform Fusion												
Dwyer Osteotomy												
Evans Calcaneal Osteotomy												
Calcaneal Slide Osteotomy												
Calcaneocuboid fusion												
Calcaneal Fractures												
Charcot Reconstruction												

* Larger selection of cannulated screws are located in ExtremiFix™ and Large Cannulated Systems™

New in 2012

ExtremiFix™ cannulated compression screws are now included in fps™. These screws offer superior compression and excellent bone purchase for interfragmentary options. fps™ offers the most comprehensive screw offering on the market to fixate the specific indication.



instrumentation

fps™ includes a comprehensive set of instrumentation designed to precisely assist in soft tissue management, plate manipulation and screw insertion. Plate cutters, bending pliers and on bone benders allow for manipulation of the plate to fit the anatomy. Various soft tissue instruments including bone clamps, sharp hooks and periosteal elevators are at reach to assist in reconstruction. OsteoMed incorporates the latest in Driver Handle designs and provides an ergonomic ratchet handle with a stable internal quick release mechanism.

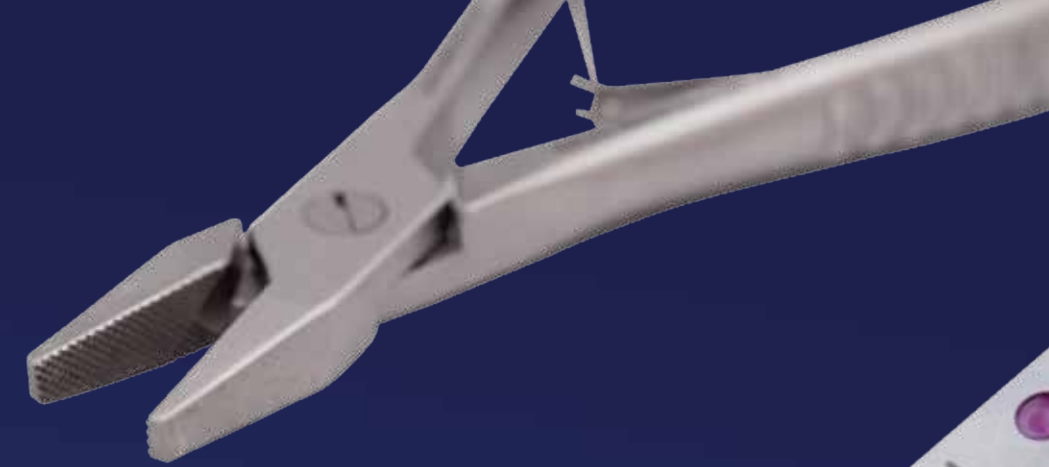
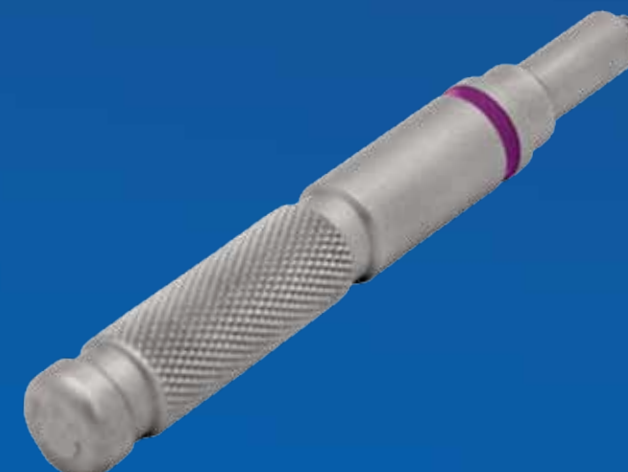


Plate Cutter

An exclusive plate cutter which cuts at a radius and prevents sharp burs on the superior surface.

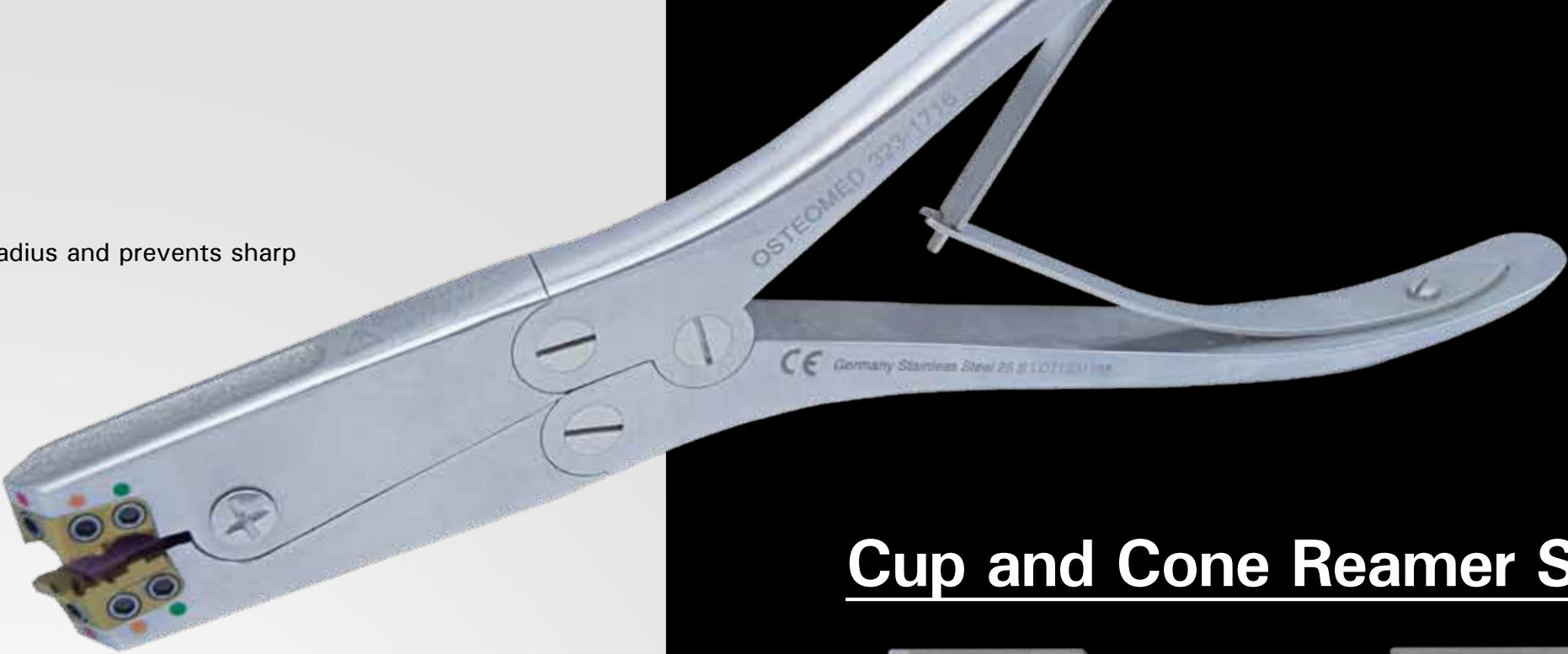


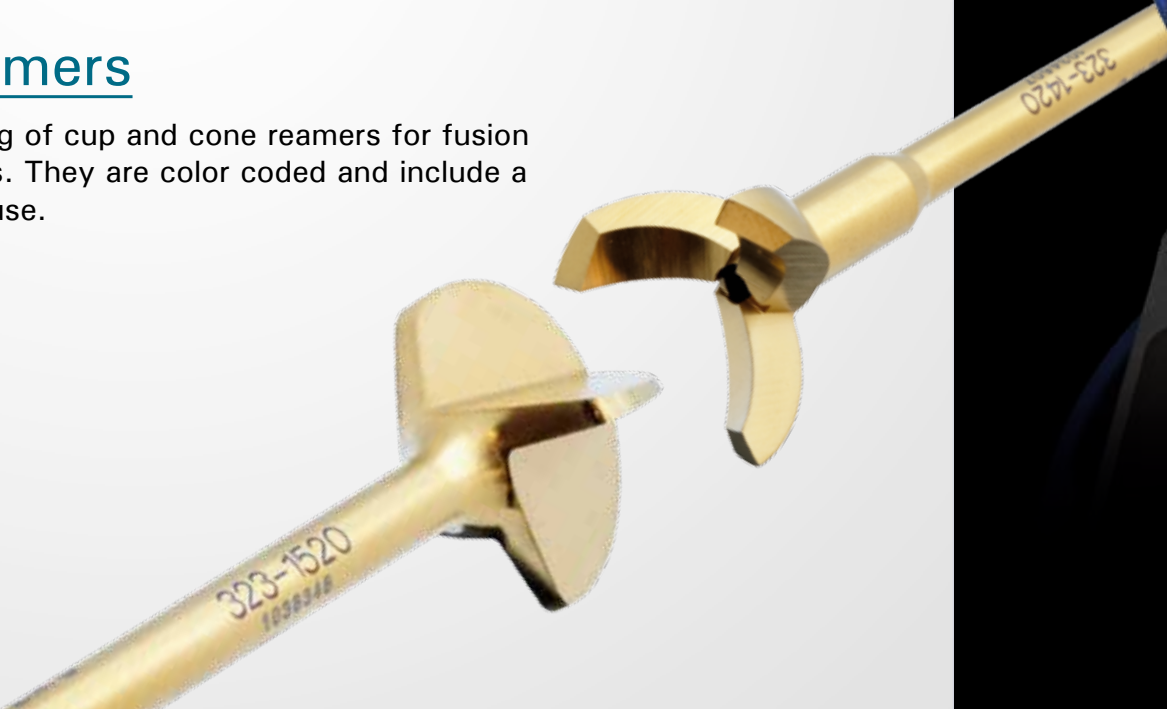
Plate Holding Taks™

Taks™ aid in precise plate placement through stable temporary fixation.



Cup and Cone Reamers

fps™ offers a complete offering of cup and cone reamers for fusion of the MTP, DIP and PIP joints. They are color coded and include a sizing instrument for ease of use.



Cup and Cone Reamer System



Complimentary products:



OsteoVation® EX
Bone Void Filler



ExtremiFix™
2.0mm, 2.4mm, 3.0mm, 4.0mm
Cannulated Screw System



M3-X™
1.2mm, 2.0mm, 2.4mm and
3.0mm solid screw system



Large Cannulated Screws
6.5mm and 7.3mm cannulated screw system



OSTEOMED

3885 Arapaho Rd.
Addison, TX 75001

Customer Service: 800.456.7779

Outside the U.S.: 001.972.677.4600

Fax: 800.390.2620

Fax Outside the U.S.: 001.972.677.4709

E-mail: customer.service@osteomed.com

www.osteomed.com