



# DURAKNIFE

DURA CUTTING INSTRUMENT



*Rethinking Possibilities, Reshaping Lives*

The image features a large, stylized illustration of the DuraKnife instrument. The instrument has a blue handle with a textured grip and a grey, crescent-shaped blade. The blade is shown in two positions: one at the top left, angled downwards, and another at the bottom right, angled upwards. The background consists of a large, curved grey shape on the left side, suggesting a surgical site or a part of the instrument's design. The overall aesthetic is clean and professional, typical of medical product marketing.

# DURAKNIFE

The **OSTEOMED DuraKnife** is a dural cutting instrument used in cranial procedures. This revolutionary patent pending instrument allows the surgeon to cut the dura while protecting the neuro tissue below. The DuraKnife has a crescent-shaped blade that lifts and incises the dura simultaneously.



## Advantages

### Triangle Design

- Ergonomic grip
- Slip resistant

### Grip

- Medical grade ABS plastic
- Lightweight material
- Textured handle

### Foot Plate

- Lifts the dura
- Protects the brain tissue

### Blade

- Surgical grade stainless steel
- Curved cutting surface
- Lifts and incises the dura

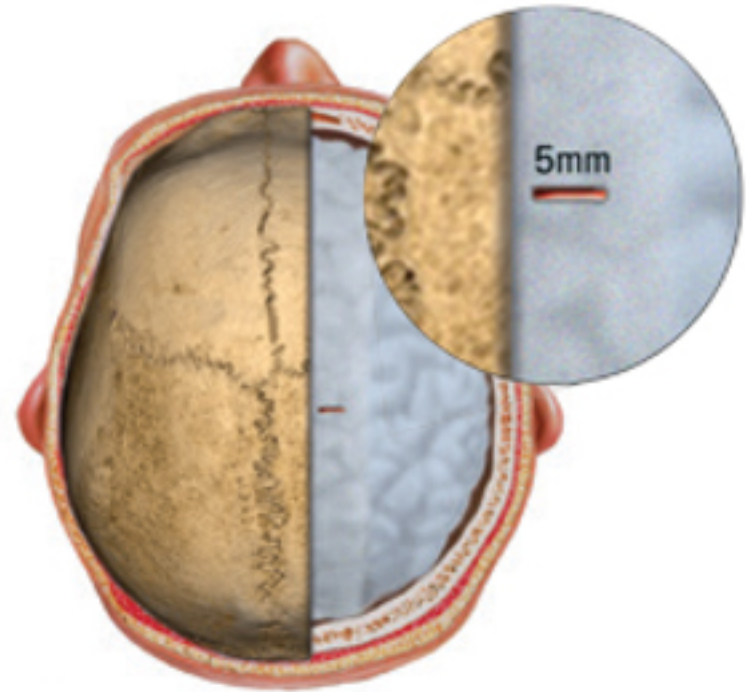


# SURGICAL TECHNIQUE

---

## Step 1

After obtaining access to the dura, make a small 5mm incision with a scalpel in order to create the starting location for cutting of the dura.



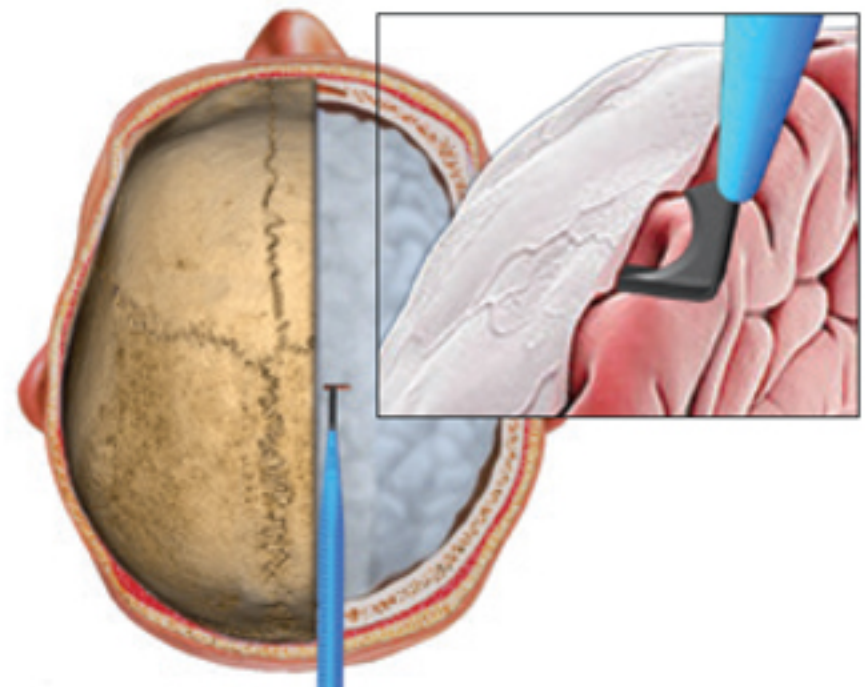
## Step 2

Remove the blade cover from the OSTEOMED DuraKnife by pulling and sliding the cover away from the handle.



## Step 3

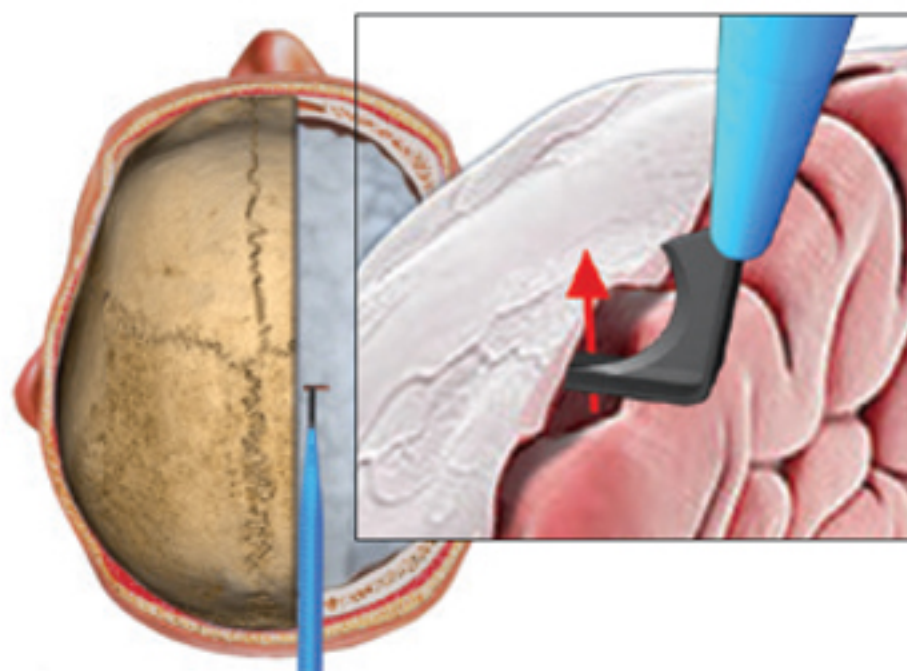
Introduce the OSTEOMED DuraKnife into the incision with the footplate underneath the dura.



# SURGICAL TECHNIQUE

## Step 4

Elevate and separate the dura from the brain with the foot plate

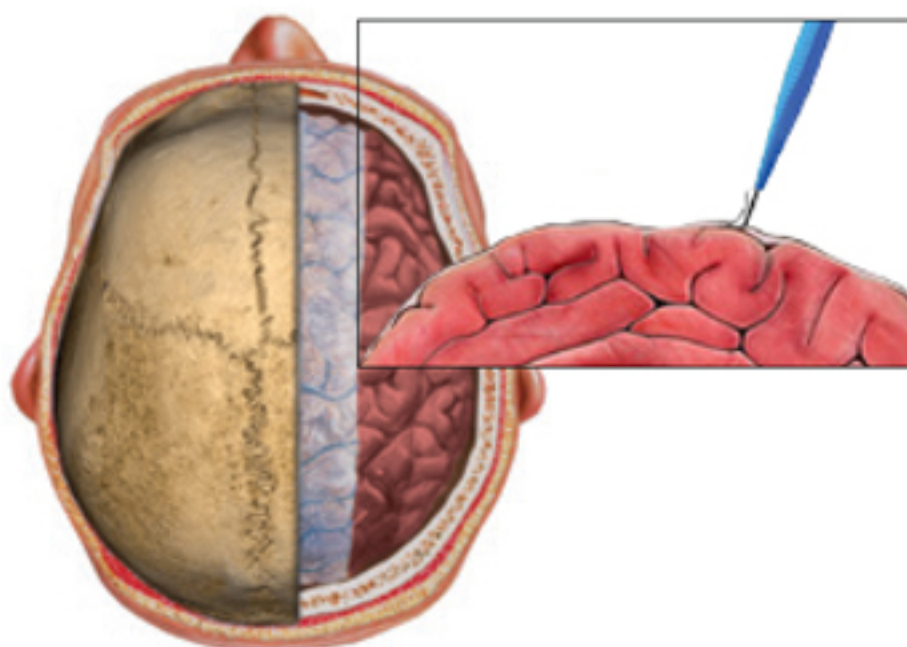


## Step 5

With the OSTEOMED DuraKnife blade positioned perpendicular to the dura, begin cutting through the dura in the same direction as the incision made with the scalpel until the desired length of cut is attained.

**NOTE:** The OSTEOMED DuraKnife will cut up to an 8 inch opening in the dura.

**NOTE:** If the OSTEOMED DuraKnife does not cut the dura or does not cut it as intended, or it inadvertently cuts the brain or other vital tissue, discontinue its use and use an alternate method.



## Step 6

The OSTEOMED DuraKnife is then removed, the blade cover is placed over the blade and the surgeon proceeds with the chosen procedure.





**OSTEOMED**  
3885 Arapaho Rd.  
Addison, TX 75001  
Customer Service: 800.456.7779  
Customer Service Fax: 800.390.2620

[www.osteomed.com](http://www.osteomed.com)